

ENGLISH

2022



100% MADE IN ITALY



# Index



GSM system

page 6



Outdoor stations

page 10



Accessories

page 23



Softwares

page 24



Apps

page 25



Although every effort has been made to provide accurate information, there may be technical or print errors in this catalogue. Videx reserves the right to make changes, corrections and improvements to such information at any time and without notice.



1986  2021



Cert. N. IT05/1217



— 100% MADE IN ITALY —

# The Italian Videophone

VIDEX is a unique company specialized in intercom and video intercom systems entirely Made in Italy, with over 30 years of experience, providing engineering expertise and attention to the installation needs in the residential and commercial sectors.

VIDEX's focus guarantees the most enhanced performing solutions, aimed to solve any installation need of professionals and system integrators who want to offer their expertises together with the high reliability that only a professional can provide, combined with the prestige of the innovations Made In Italy.

## 100% MADE IN ITALY

VIDEX is a video intercom system specialist, which has a production cycle entirely made in Italy, directly originating from the hills of Monte Giberto in the province of Fermo.



The entire process is strictly developed in Italy; starting from the project and design, through the supply chain of raw materials to the electronics manufacturing, guaranteeing quick deliveries of the orders, reliability and an innovative approach which make VIDEX devices so advanced.

Being the Manufacturers of all components, ensures continuity in the systems, durability and complete reliability because nothing is handled by third parties.

VIDEX supports the professionals in their field and they can rely on a specialized manufacturer that guarantees performances, stability and support throughout the complete life cycle of the product.

Italy has always been a leader in innovation and ideas in the electronics field and VIDEX has been leading the field of video door entry for over 35 years and in over 40 countries.

VIDEX, faithful to its focus, has always dedicated the research and the development of products which can inter operate with other devices to meet the installation needs of system integrators and professionals who want to install products which can be interfaced with third parties devices without limitations and as part of a wider system tailored to the customer's needs.



## *The hassle free intercom system where distances and cabling are never an issue*

The ideal system where running cables or utilizing existing cables is not an option.

Realize systems from 1 to 750 users thanks to GSM wireless technology.

A frequent problem when installing any intercom system is the running of new cables when there are no existing cables or routes available.

**These problems are often encountered when:**

**The intercom panel is separate from the building, i.e. gates where long distances are often involved.**

**Existing buildings where second fixing or decorating has already been completed.**

**Buildings of historical/architectural (Listed buildings for example) where buildings works have to be tightly controlled.**

In all these situations it can be both expensive and impractical to use a conventional intercom system.



### **Videx GSM system allows you to build a system without any cable infrastructure**

Just install an external GSM intercom panel with local power supply and antenna and utilize the existing mobile telephone network.

### **How do I install a system with GSM technology?**

The installation is extremely simple, after installing the intercom panel simply insert a SIM card and program everything using either the free apps, text messages, PC software or via a web browser.

## THE GSM SYSTEM IS AVAILABLE FOR:

### 4000 SERIES MODULAR SYSTEM for up to 40 users

### 4000 SERIES DIGITAL CALL PANELS for up to 750 users

After initiating a call at the intercom panel it will call up to 4 telephone numbers per apartment, cascading to the next if the first is not answered.

GSM technology is available in 4G, with fallback in 3G or 2G and ensures the possibility of creating an intercom system in all those complex applications where traditional wiring is not possible.

It also offers the advantage of being **always reachable wherever you are**, thanks to the ability to associate mobile phone numbers and then **respond and manage all functions remotely via DTMF tones on the phone's keyboard**.

GSM technology is therefore ideal for all applications where cabling is an issue or where there is a need to take calls when you are away.

3 outputs and 2 inputs

3 actuations controlled by DTMF tones

## DIAL TO OPEN FEATURE

With Dial to Open you can register up to 1000 telephone numbers that can be used to open the door or gate. For example the opening of a gate by the gardener. Just call the intercom number and the gate will automatically open without the need to start a voice call. Dial to open number can be managed easily remotely and can include access levels to restrict the use to certain times and days.

## MASTER NUMBER FEATURE

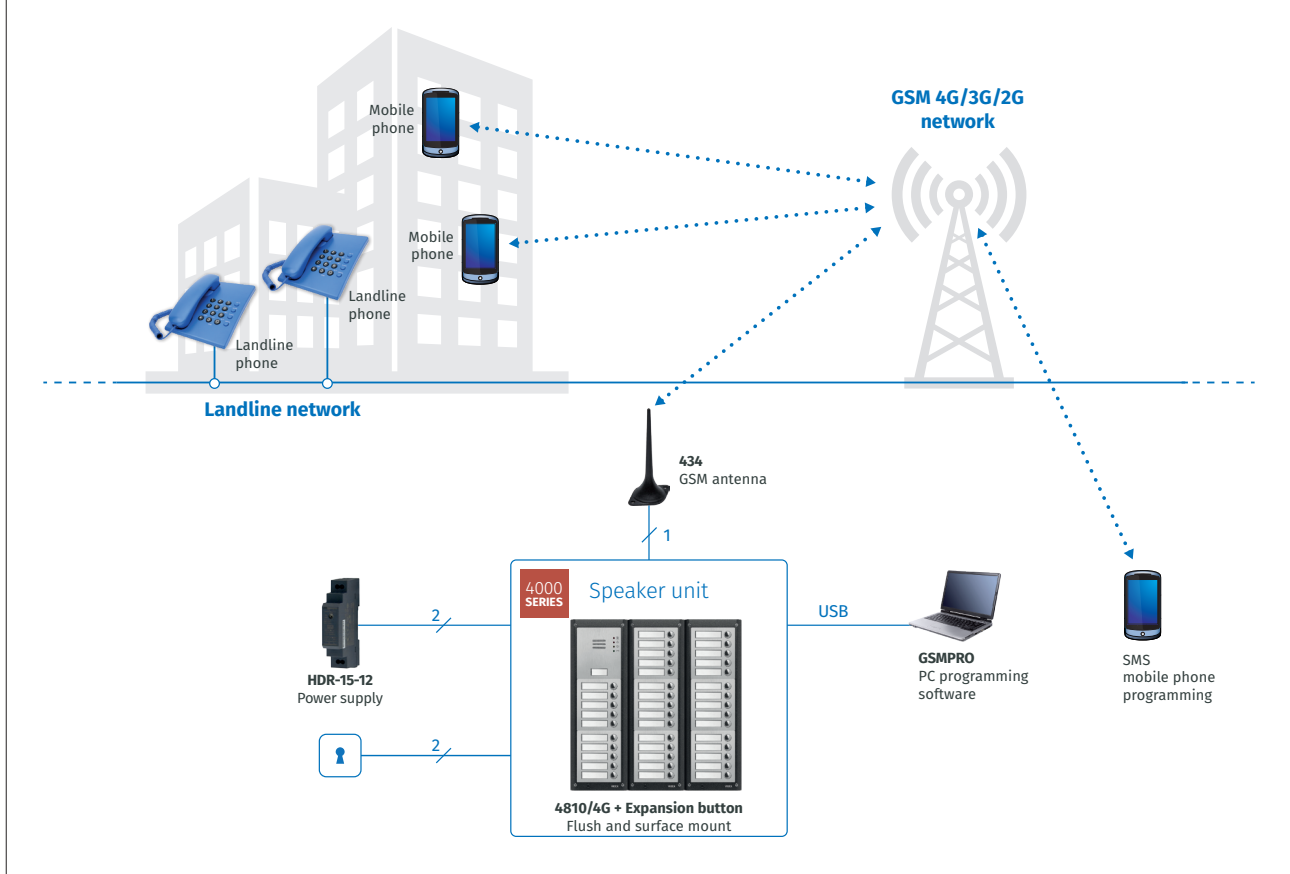
A do not disturb feature can be setup for certain times and days.

With MASTER NUMBER it is possible to set a predefined number that always receives calls even if outside the time band.

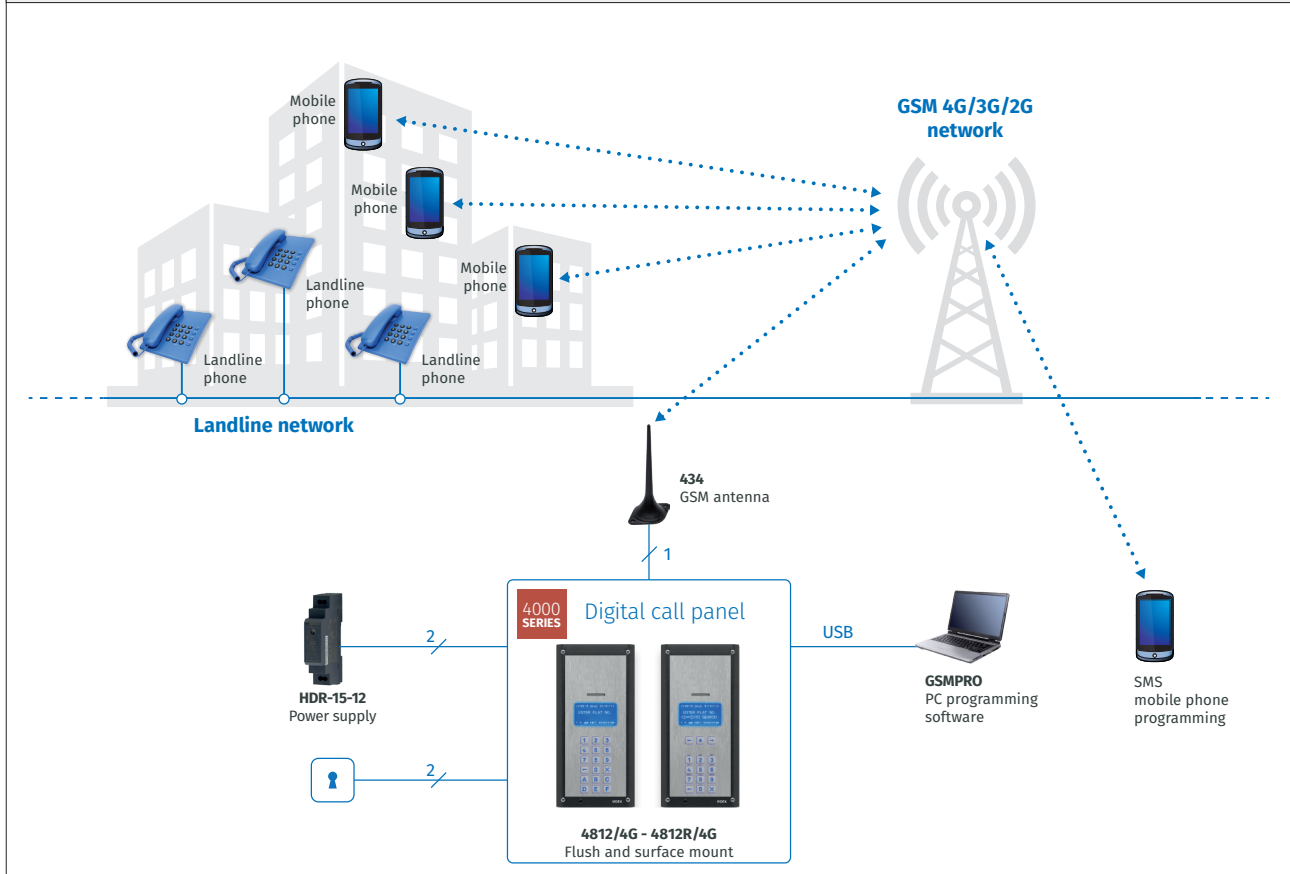
## OPTIONAL ACCESS CONTROL MODULE

On the 4000 series push-button panel, modular version and digital panel, it is possible to connect up to a maximum of 7 access control modules with RFID proximity technology (4850R) or digital keyboards (4903) for small access control systems. The devices are connected by RS485 bus and can extend over distances of up to 500 meters.

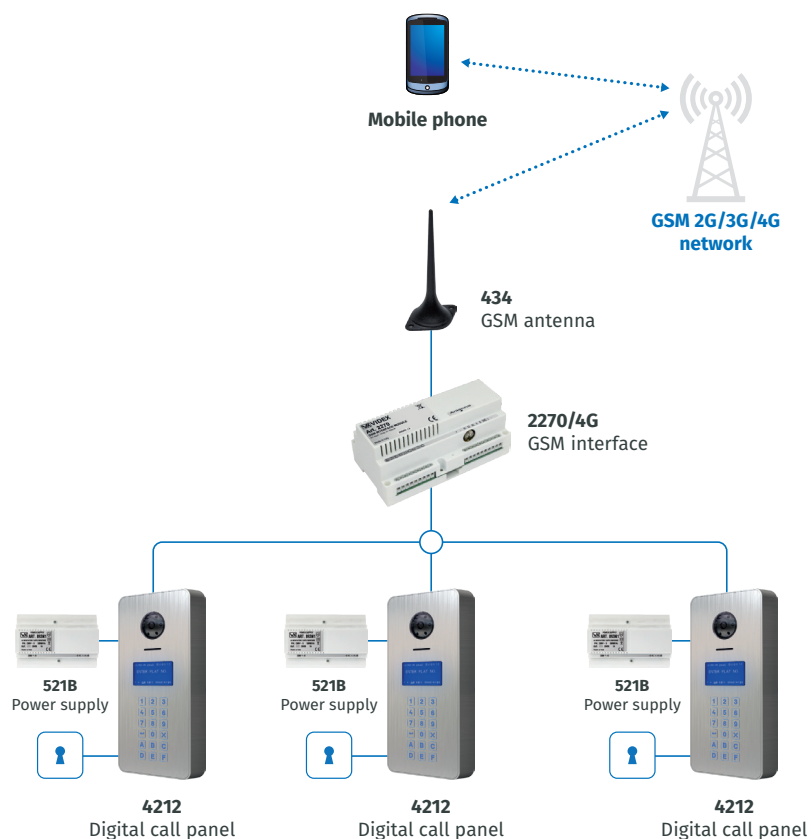
## GSM system with pro range speaker unit, from 1 to 40 users



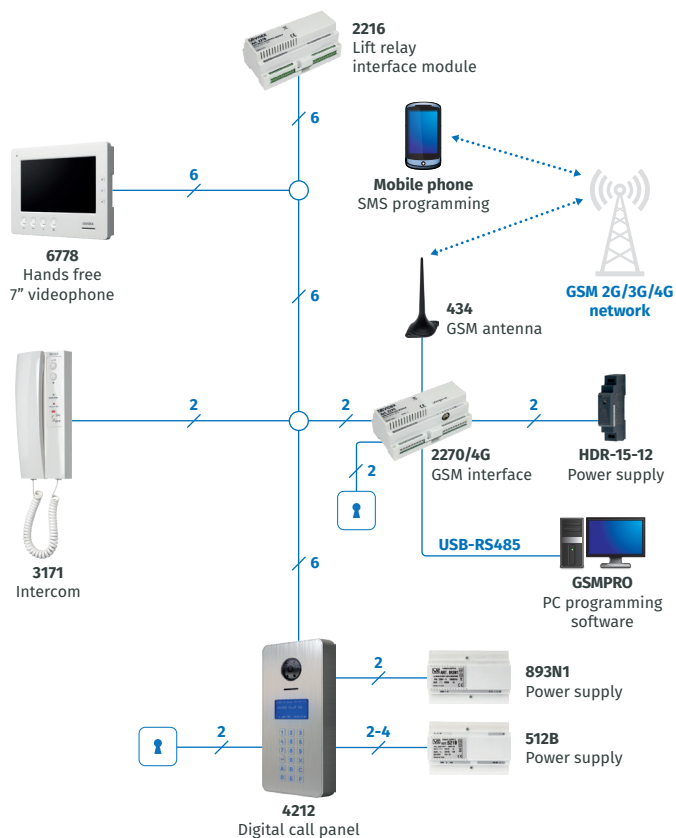
## GSM system with Vandal resistant digital call panel, from 1 to 750 users



## VX2200 digital system with art.2270 GSM interface and multiple outdoor station



## VX2200 digital system with art.2270 GSM interface and art.2216 Lift Relay Module



# Outdoor stations

## 4000 SERIES

The 4000 Series outdoor stations redefines the standard modular solution: extremely robust, easy to install and ultra compact.

The tech design makes it ideal in any installation solution, from residential to large building structures, private and industrial.



### MODULAR: FULLY CUSTOMISABLE FOR EACH INSTALLATION

Create solutions for up to 40 audio users with the addition of access control using up to 9 modules.

The digital call panels are characterized by its compact size, unique on the market, occupying only 2 modules.

### FEAR NO EXTREME CONDITIONS

The Series 4000 modular control panel has been designed for extreme environmental installations and resistant to thermal variations in some environments, without compromising in any way the perfect operation and performance. The control panel resists the constant cold down to a temperature of  $-20^{\circ}\text{C}$  and high temperatures of  $+60^{\circ}\text{C}$ .

### AISI 316 STEEL: DESIGNED TO LAST OVER TIME\*

The 4000 series push-buttons are designed to last over time and designed for critical installations subject to atmospheric and marine environments.

The modules are made of stainless steel satin AISI 316 (marine grade) which gives durability and strength.

### IK07: ROBUST WITH ELEGANCE\*

The modular push-buttons 4000 series are vandal-resistant with impact resistance IK07 grade.

This feature gives the possibility to be installed in environments where the main requirement is the anti-vandalism without sacrificing a minimal and pleasant appearance.

### IP65: ABSOLUTE PROTECTION

The neoprene gasket present in the frame modules makes the buttons sealed to the wall with perfect adherence and protection even on uneven surfaces.

IP65 grade makes it unnecessary to install shields to protect against rain.

\*Only available for Matte stainless steel finish.

### SMALL SIZE: FLUSH OR SURFACE MOUNTED

The 4000 series anti-vandal push-button panel in versions with traditional modules or keypad surpasses all others for its small size.

The installation of the modules is quick and easy, the insertion takes place from the front in a simple and intuitive way, ensuring the modules can't be pushed into the frame during attempted vandalism.

### REDUCED INSTALLATION AND MAINTENANCE TIMES

The frame includes side hinges to enable easy access, installation and maintenance by the installer.

All modules of the 4000 Series Analogue Push Button Panel use flat IDC cables that allow a quick installation by drastically reducing working time.

The cable CFL17 (17 cm) is supplied with all modules while the cable CFL45 (45 cm) should be ordered separately in case the button modules are in multiple columns.

### VISUAL AND ACOUSTIC SIGNALLING

The audio modules are equipped with 4 visual signaling LEDs for the deaf: busy, call in progress, open communication and door opening. Audible announcements for the visually impaired indicate the current call progress and status.

### RFID READER

The embedded RFID proximity key reader can configure up to 1,000 tag keys or ISO card for the activation of a door or gate. The keys are configured via PC, app and SMS.

The digital panel RFID reader allow a fob or card to be used by each user.



### EXTENDED MICROPHONE

All audio modules are equipped with a extended microphone that is housed separately from the module in the bottom of the 4000 Series frame. In this way the audio balance is perfect and problems of larsen effect or amplification are eliminated, for example when the unit is installed in noisy environments.

### SIMPLIFIED CONFIGURATION

The 4000 series push-buttons are easy and intuitive for configuration via the GSMPRO software and free apps.

## 1-module plate finishes



### Matte stainless steel

AISI 316 stainless steel



IK07  
vandal resistant



IP65  
protection degree

Add **/M** to the product code



### Anodized aluminium



IP65  
protection degree

Add **/A** to the product code



### Brushed stainless steel

**VANDAL RESISTANT LINE**



IK09  
vandal resistant

## Digital call panel plate finish

### Brushed stainless steel



IK09 Vandal resistant



IP65 protection degree



## Speaker units modules



4G/3G/2G



Built-in proximity  
key reader



IDC connector



**4810/4G-0**



**4810/4G-1**



**4810/4G-2**

Connection	GSM 4G/3G/2G		
Visual signalling LED	Busy, Ring, Speak, Door Open		
Name plate/Back light	Yes, Blue		
Integrated proximity access	125Khz H4102, 1.000 keys		
Built-in buttons	0	1	2
Max buttons	40		
Mounting	Modular 4000 series - 1 module		
Telephone numbers per button	4		
Dial to open numbers	1000 permanent, 32 temporary		
Voice annunciation	Yes		
Event log	Yes, 4000 events		
Bootloader	Yes		
Timebands	Yes, 1		
Auxiliary input	Yes, 2		
Auxiliary Open Collectors output	Yes, 2		
Programmings	SMS/USB/APP		
Interfaces	RS-485, Micro-USB		
Adjustments	Speaker volume		
Dry contact relay	1, (Max 3A@ 24Vdc)		
PTE input	Yes, 1		
IDC connector	Yes		
Finishes	Matte stainless steel (/M), Anodized aluminium (/A)		
Mounting	Modular 4000 series - 1 module		
Working voltage	12Vdc		
Working temperature	-20° / +60°C		

## Button expansion modules (single and double row)



	<b>4043</b>	<b>4044</b>	<b>4045</b>	<b>4042D</b>	<b>4043D</b>	<b>4044D</b>	<b>4045D</b>
<b>Buttons</b>	3	4	5	4	6	8	10
<b>Back light</b>	Blue						
<b>IDC connector</b>	Yes						
<b>Button connection terminals</b>	16 pin IDC connector						
<b>Finishes</b>	Matte stainless steel (/M), Anodized aluminium (/A)						
<b>Mounting</b>	Modular 4000 series - 1 module						
<b>Power supply</b>	12 Vdc +/- 10%						
<b>Working temperature</b>	-20° / +60°C						

## Blank and information modules



	4840	4846
Description	Blank module	Information module
Back light	-	Blue
Opening size (mm)	-	83 x 104
Information card size (mm)	-	96 x 113
Finishes	Matte stainless steel (/M), Anodized aluminium (/A)	
Mounting	Modular 4000 series - 1 module	
Power supply	-	12 Vdc
Working temperature	-20° / +60° C	

## Codelock modules



	4903
Relay number, contacts and voltages	2 Dry contacts, Max 24Vac/dc 2A
PTE input	Yes, for relay 1 & 2
Operation	Standalone/Connected
Programming	Keypad/PC/SMS
Number of codes	2 codes, 1 per relay (standalone) 400 permanent codes (via RS485) 32 temporary codes (via RS485)
Interfaces	RS-485
Keypad backlight	Blue. Programmable
Finishes	Matte stainless steel (/M) Anodized aluminium (/A)
Mounting	Modular 4000 series - 1 module
Power supply	12/24 Vac/dc
Working temperature	-20 +60° C

## Proximity key readers modules



	4850R
Relay number, contacts and voltages	1 Dry contacts, Max 24Vac/dc 2A
PTE input	Yes
Keys	1000
RFID frequency	125kHz
Operation	Standalone
Programming	Via GSM intercom
Backlight	Blue. Programmable
Finishes	Matte stainless steel (/M) Anodized aluminium (/A)
Mounting	Modular 4000 series - 1 module
Power supply	12/24 Vac/dc
Working temperature	-20 +60° C



## Digital call panels



**4G/3G/2G**



**Built-in proximity  
key reader**



**IK09  
Vandal resistant**



**IP65  
Protection grade**



**4812/4G**



**4812R/4G**

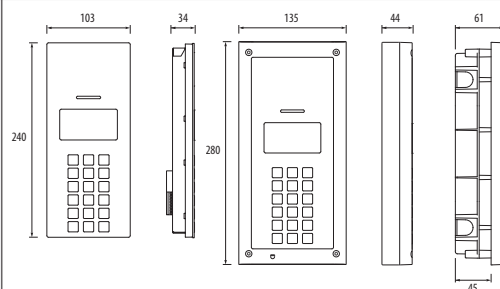


## Digital call panels


**4812/4G**

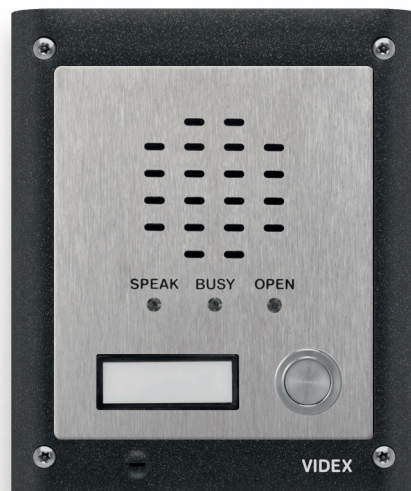
**4812R/4G**

Connection	GSM 4G/3G/2G	
Display/Backlight	Graphical 128x64px/Blue	
Integrated proximity access	Yes 125Khz H4102 2000 keys	
Keypad buttons	18	15
Repertory name facility	No	Yes
Speech board opt	Yes	
Interfaces	RS-485/USB	
Programming	Keypad/USB/SMS/APP	
Max users/User codes	750/750	
Telephone number per user	4	
Dial to open numbers	3000 permanent, 32 temporary	
Access control	User code/Proximity key reader	
Dry Contact Relay	1, (Max 3A@ 24Vdc)	
Events log	8000 events	
Bootloader	Yes	
Timebands	Yes, 10	
PTE input	Yes, 1	
Auxiliary input	Yes, 1	
Auxiliary open collectors output	Yes, 1	
Plate type	AISI 316 stainless steel, Vandal resistant IK09, IP65 Protection Grade	
Finish	Brushed stainless steel	
Mounting	Modular 4000 Series 2-module	
Power supply	12Vdc	
Working temperature	-20° / +60°C	
Size (mm)	103 x 240 x 43	



## Speaker units modules

### VANDAL RESISTANT LINE



4G/3G/2G



IK09  
Vandal resistant



VR4KGSM/4G-0



VR4KGSM/4G-1



VR4KGSM/4G-2



VR4KGSM/4G-3



VR4KGSM/4G-1NP

Connection	GSM 4G/3G/2G				
Visual signalling LED	Busy, Speak, Door open				
Name plate/Back light	-				Yes, blue
Integrated proximity access	Optional up to 1000 users (additional reader by Wiegand port)				
Built-in buttons	0	1	2	3	1
Max buttons	24				
Telephone numbers per button	4				
Dial to open numbers	1000				
Voice annunciation	Optional				
Event log	Yes, 4000 events				
Bootloader	Yes				
Timebands	Yes, 1				
Auxiliary input	Yes, 1				
Auxiliary Open Collectors output	Yes, 1				
Programmings	SMS/USB				
Interfaces	Micro-USB				
Adjustments	Speaker volume				
Dry contact relay	1, (Max 2A@ 24Vac/dc)				
PTE input	Yes, 1				
Plate type	IK09 vandal resistant				
Finish	Brushed stainless steel				
Mounting	Modular 4000 series - 1 module				
Working voltage	12Vdc				
Working temperature	-20° / +60°C				

# Button expansion modules

## VANDAL RESISTANT LINE



**IK09**  
Vandal resistant



**VR4KBM-4**



**VR4KBM-5**



**VR4KBM-6**



**VR4KBM-7**



**VR4KBM-8**



**VR4KBM-9**

	VR4KBM-4	VR4KBM-5	VR4KBM-6	VR4KBM-7	VR4KBM-8	VR4KBM-9
Buttons	4	5	6	7	8	9
Button connection terminals	8	10	12	14	16	18
Plate type	IK09 vandal resistant					
Finish	Brushed stainless steel					
Mounting	Modular 4000 series - 1 module					
Working temperature	-20° / +60° C					



**VR4KBM-2NP**



**VR4KBM-3NP**



**VR4KBM-4NP**

	VR4KBM-2NP	VR4KBM-3NP	VR4KBM-4NP
Buttons	2	3	4
Name plate/Back light	Yes, blue		
Button connection terminals	4	6	8
Plate type	IK09 vandal resistant		
Finish	Brushed stainless steel		
Mounting	Modular 4000 series - 1 module		
Working voltage	12 Vdc +/- 10%		
Working temperature	-20° / +60° C		

## Blank and information modules

### VANDAL RESISTANT LINE



**VR4KBLM**



**VR4KIFM**

Description	Blank module	Information module
Back light	-	Blue
Opening size (mm)	-	52 x 85
Information card size (mm)	-	62 x 100
Plate type	IK09 vandal resistant	
Finish	Brushed stainless steel	
Mounting	Modular 4000 series - 1 module	
Power supply	-	12 Vdc
Working temperature	-20° / +60° C	

## Codelock modules

### VANDAL RESISTANT LINE



**VR4903**

Relay number, contacts and voltages	2 Dry contacts, Max 24Vac/dc 2A
PTE input	Yes, for relay 1 & 2
Operation	Standalone/Connected
Programming	Keypad/PC
Interfaces	RS-485
Keypad backlight	Blue. Programmable
Plate type	IK09 vandal resistant
Finish	Brushed stainless steel
Mounting	Modular 4000 series - 1 module
Power supply	12/24 Vac/dc
Working temperature	-20 +60° C

## Proximity key readers modules

### VANDAL RESISTANT LINE



**VR4KVPM**

Keys	Control Unit <sup>1</sup>
RFID frequency	125kHz
Operation	Connected
Backlight	Blue. Programmable
Plate type	IK09 vandal resistant
Finish	Brushed stainless steel
Mounting	Modular 4000 series - 1 module
Power supply	12Vdc
Working temperature	-20 +60° C

<sup>1</sup> The number of keys managed depends on the control unit connected (Vprox20, Vprox100, Vprox250, Vprox1000 and Vprox4000).

## Front support

The front support is available in 1, 2 and 3 module versions and includes:

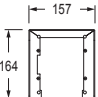
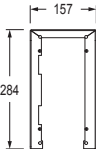

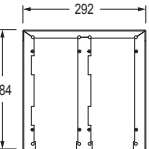
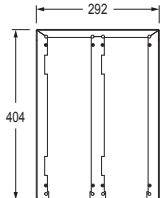
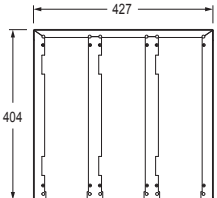
- The flush back box.
- The module support frame is provided with a waterproof gasket and security screws for fixing to the flush back box.
- Spacers to connect the back boxes together when the outdoor station requires more than 3 modules.



	4851	4852	4853
Modules	1	2	3
Mounting	Flush		
Protrusion (mm)	17		
Recessed depth (mm)	45		
Size (mm)	135 x 160 x 17	135 x 280 x 17	135 x 400 x 17
Columns	1		
Back box	120 x 143 x 45	120 x 263 x 45	120 x 383 x 45
Finishes	Gun metal grey (standard), Aluminium painting (/AP)		

## Rainshields for front support



	4871	4872	4873	4874	4876	4879
Modules	1	2	3	4	6	9
Mounting	Flush					
Protrusion (mm)	35					
Size (mm)	157 x 164 x 35	157 x 284 x 35	157 x 404 x 35	292 x 284 x 35	292 x 404 x 35	427 x 404 x 35
Columns	1			2		3
Finishes	Gun metal grey (standard), Aluminium painting ( <i>/AP</i> )					
						

## Surface mounting unit

The surface mounting units are available in 1, 2, 3, 4, 6 and 9 module versions which include:

- The surface box to fix to the wall with the screws provided.
- The module support frames are provided with waterproof gaskets and security screws. When surface mounting 4, 6 or 9 module versions, the support frames provided are 2 x two module, 2 x three module and 3 x three module versions.



**4881**      **4882**      **4883**      **4884**      **4886**      **4889**

Modules	1	2	3	4	6	9
Mounting	Surface					
Protrusion (mm)	44					
Size (mm)	135 x 160 x 44	135 x 280 x 44	135 x 400 x 44	270 x 280 x 44	270 x 400 x 44	405 x 400 x 44
Columns	1			2		3
Finishes	Gun metal grey (standard), Aluminium painting (/AP)					

## Rainshields for surface mounting unit



**4891**      **4892**      **4893**      **4894**      **4896**      **4899**

Modules	1	2	3	4	6	9
Mounting	Surface					
Protrusion (mm)	62					
Size (mm)	157 x 164 x 62	157 x 284 x 62	157 x 404 x 62	292 x 284 x 62	292 x 404 x 62	427 x 404 x 62
Columns	1			2		3
Finishes	Gun metal grey (standard), Aluminium painting (/AP)					

# Accessories

**2270/4G**

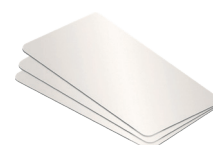
<b>Description</b>	VX2200 digital system GSM interface. Interface with the VX2200 digital 2 wire bus system. It enables a call to be made from an entry point (door, gate etc.) to any telephone number (mobile or land line). It connects directly to the 2 wire databus and is compatible with the full range of VX2200 intercom panels both functional or digital
<b>Connection</b>	GSM 4G/3G/2G
<b>Users</b>	Up to 180
<b>Programming</b>	SMS/USB/RS-485
<b>Auxiliary inputs</b>	3
<b>Dry contact relays</b>	3
<b>Event log</b>	Yes, 8000 events
<b>Dial to open numbers</b>	Up to 3000 (1000 numbers per relay)
<b>Interfaces</b>	VX2200 BUS, USB and RS485
<b>Working voltage</b>	12Vdc
<b>Housing</b>	9 modules A type DIN box
<b>Mounting</b>	DIN bar or surface
<b>Dimension (mm)</b>	157.5 x 85 x 65

**434**

<b>Description</b>	GSM antenna
<b>Connection</b>	GSM 4G/3G/2G
<b>Mounting</b>	Surface (L bracket included)
<b>Dimensions (Antenna plus bracket, mm)</b>	170 x 36 x 50

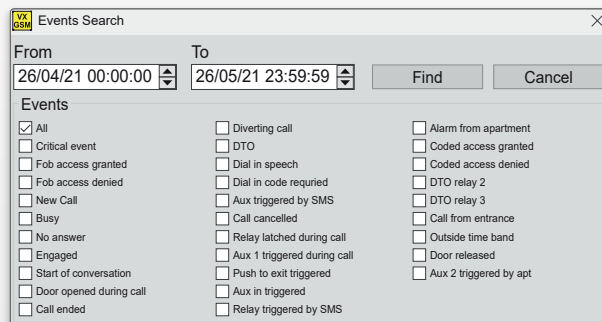
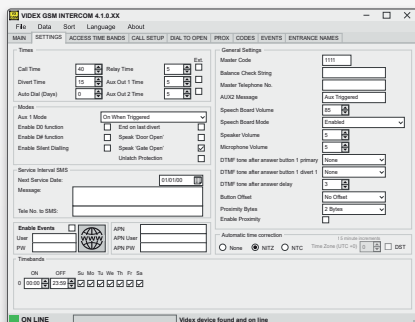
**HDR-15-12**

<b>Description</b>	Power supply unit
<b>Input voltage</b>	85-264Vac
<b>Output voltages</b>	12Vdc / 1.25A
<b>Housing</b>	1 module A Type DIN box
<b>Mounting</b>	DIN bar
<b>Dimensions (mm)</b>	17.5 x 90 x 54.5

**955/T****955/C**

<b>Description</b>	Videx proximity fob	Videx proximity card
<b>Code</b>	32bit	
<b>Reading distance</b>	Up to 20mm (using Videx readers)	Up to 50mm (using Videx readers)
<b>Material</b>	Plastic	PVC
<b>Colour</b>	Blue and grey	Gloss white
<b>Dimensions</b>	36mm diameter 5mm thickness	Badge size ISO standard 85.6x 54x 0.76mm
<b>Note</b>	Personalized with Videx logo	Compatible for silk screen printing

# Softwares



	<b>GSM PRO</b>
<b>Description</b>	PC software. Software to program through USB connection.
<b>Operating system</b>	MS Microsoft Windows®
<b>Box content</b>	Installation CD and USB connection cable

# Apps

## GSM SMS WIZARD & GSM SMS WIZARD PRO APPS

Two GSM mobile Apps are available: the SMS Wizard for users and the SMS Wizard PRO for installers and engineers, both of which are available to download for FREE for both Android and iOS devices from Google Play or the App Store



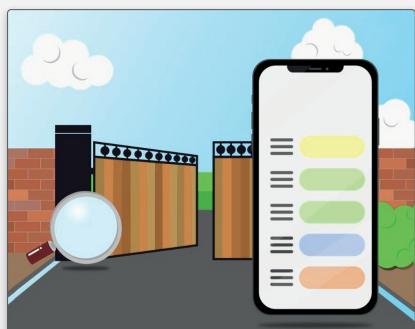
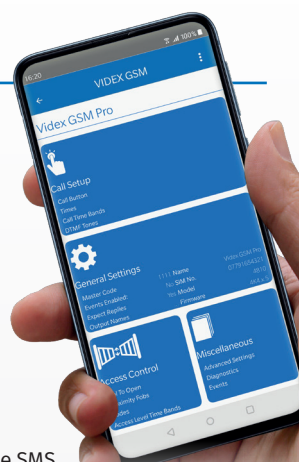
### SMS Wizard Key Features:

- Compatible with all the latest GSM variants.
- Program up to 10 GSM intercoms.
- Program call numbers (1 primary & up to 3 divers).
- Program multiple dial to opens including 32 temporary numbers.
- Program up to 400 permanent access codes <sup>2</sup>.
- Program up to 32 temporary access codes <sup>2</sup>.
- Program multiple proximity fobs/cards <sup>1</sup>.
- Assign access control timebands for dial to open numbers, access codes and proximity fobs/cards <sup>1</sup>.
- Program up to 10 free access timebands & 10 call timebands <sup>1</sup>.
- Assign access levels for the dial to open numbers, access codes and proximity fobs/cards <sup>1</sup>.
- Monitor GSM events in real time.
- Check the GSM's signal strength and firmware version.
- SMS Wizard App available without registration.



### SMS Wizard PRO Key Features:

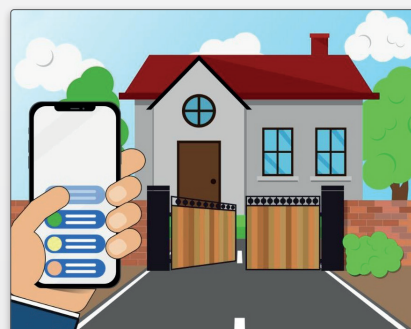
- Includes all the same features as the SMS Wizard plus additional features intended for installers and engineers.
- Setup and manage an unlimited number of sites, each with multiple GSM intercoms installed.
- Store site specific details including contact details and site address.
- Diagnostic tools to aid the engineer during installation and for ongoing site maintenance.
- All settings are stored on a Cloud Server and can be shared with multiple devices.
- Remotely monitor GSM events that are also stored on the Cloud Server and view them on multiple smart devices.
- Includes an 'In-App' help section to guide installers through the App's features.
- Access and view the latest GSM manuals.
- Download the SMS Wizard PRO App and register for an account.



Easily control your access gates or doors from wherever you are



Automatically build SMS programming messages, easily add Call numbers, Access fobs, Codes and more...



Monitor your gates or doors in real-time using the in app Events Viewer

### GSM App Features

	SMS Wizard	SMS Wizard PRO
Call button/Apt. no. programming (inc. primary & divert no's)	✓	✓
Dial to open number programming	✓	✓
Program permanent & temporary codes <sup>2</sup>	✓	✓
Program multiple proximity fobs/cards <sup>1</sup>	✓	✓
Program GSM time settings (inc. call, divert, relays & auxiliary times)	-	✓
Button 1/divert 1 DTMF tone assignment <sup>1</sup>	-	✓
Program call timebands & free access timebands	✓	✓
Assign access levels to dial to open, access codes and proximity	✓	✓
Setup & manage unlimited sites each with multiple GSM intercoms	-	✓
Store site specific details (inc. contact details & address)	-	✓
General settings & GSM setup (inc. firmware check feature)	✓	✓
Advanced settings feature (inc. specific settings for each GSM model)	-	✓
Monitoring GSM events in real time	✓	✓
Diagnostic tools for testing the GSM during install & maintenance	-	✓
Access to the latest GSM manuals	-	✓
Share settings across multiple devices	-	✓



Download on the App Store

GET IT ON Google Play

<sup>1</sup> Dependent on GSM model

<sup>2</sup> For the 4903 keypad module

## Terms and conditions of sale

---

### 1) Definitions

In this document the following words shall have the following meanings:

- a. "Buyer" means the organisation or person who buys Goods;
  - b. "Goods" means the items to be supplied to the Buyer by the Seller;
- Videx Electronics S.p.A. will be hereafter called "Videx".

### 2) General Conditions

Any variation to these Terms and Conditions (including any special terms and conditions agreed between the parties) shall be inapplicable unless agreed in writing by Videx.

### 3) Orders

Any order sent to Videx implies the Buyers acceptance of all the conditions listed in this document.

Purchases are finalized when the Buyer receives the order confirmation from Videx.

After this confirmation, the order cannot be cancelled unless Videx explicitly agrees in writing.

### 4) Prices

Price list is to be considered variable as it is subject to variations in production costs which are outside of the control of Videx.

Unless otherwise agreed in writing, prices shall be considered ex-works.

### 5) Retention of Title

Title to the Goods shall not pass to the Buyer until Videx has been paid in full for the Goods.

### 6) Returned Goods

Returned Goods will not be authorized unless agreed in writing by Videx. Authorized Goods will be accepted only if intact and in their original packaging. Goods not included in the price lists in force will not be accepted.

In case of accepted returned Goods a credit note, corresponding to the invoiced amount reduced by 30%, will be issued.

### 7) Liability

a. Videx will not be held responsible for damages arising from incorrect installations which do not comply with the specifications provided or for installations carried out by third parties, or for works carried out by third parties on behalf of the Buyer;

b. Videx will make good, by repair or by supply of a replacement, defects which, under proper use, appear in the Goods within a period of 12 months after the Goods been sold and arise solely from faulty design, materials or workmanships; always provided that the defective parts have been acknowledged and so declared by Videx;

c. Videx does not acknowledge any compensation for direct or indirect damages;

d. All goods must be returned to Videx at Buyer's own expenses, until such time as these are tested Videx admits no liability for their condition;

e. Videx admits no liabilities for defective parts caused by wear and tear;

f. All Goods returned for repair must be accompanied by a note in writing stating the nature of the defect claimed, the date of purchase, the invoice number and should be clearly marked with the returning purchaser's full address;

g. Any returned Goods claimed to be faulty by the Buyer and consequently tested and found to be working correctly by Videx, will be returned to the Buyer and a cost will be charged accordingly.

### 8) Payment

Unless agreed in writing by Videx, the following general conditions apply:

a. Payment Terms and Conditions will be specified on the invoice;

b. Interest rates as per the banking conditions effective at the time will be charged on top of overdue payments;

### 9) Governing Law and Jurisdiction

This Agreement shall be governed by and construed in accordance with the laws of the Republic of Italy. All the disputes arising out of or in connection with this Agreement shall be submitted to the exclusive jurisdiction of the Courts of Fermo (Italy).





100% MADE IN ITALY

## VIDEX ELECTRONICS S.P.A.

Via del Lavoro, 1 - 63846 Monte Giberto (FM) Italy

Tel: (+39) 0734 631669 - Fax: (+39) 0734 632475

info@videx.it - [facebook.com/videx.electronics](https://www.facebook.com/videx.electronics)

[www.videx.it](http://www.videx.it)



*Portugal office:*

**VX IBÉRIA, UNIPESSOAL LDA**

Rua Tenente Mário Grilo, 26 D, E, F  
4200-397 Porto

Phone: (+351) 221 124 531

[www.videx.it](http://www.videx.it)

comercial@videx.it



*Singapore office:*

**VIDEX ASIA PACIFIC PTE LTD**

1 Tampines North Drive 1,

#06-08, T-Space

Singapore 528559

Phone: (+65) 81898912

commercial@videx.it



*Main UK office:*

**VIDEX SECURITY LTD**

1 Osprey Trinity Park

Trinity Way

London E4 8TD

Phone: (+44) 0370 300 1240

Fax: (+44) 020 8523 5825

[www.videxuk.com](http://www.videxuk.com)

marketing@videxuk.com



*Northern UK office:*

**VIDEX SECURITY LTD**

Unit 4-7

Chillingham Industrial Estate

Chapman Street

Newcastle Upon Tyne - NE6 2XX

Tech Line: (+44) 0191 224 3174

Phone: (+44) 0370 300 1240

Fax: (+44) 0191 224 1559



*Greece office:*

**VIDEX HELLAS Electronics**

48 Filolaou Str.

11633 Athens

Phone: (+30) 210 7521028

(+30) 210 7521998

Fax: (+30) 210 7560712

[www.videx.gr](http://www.videx.gr)

videx@videx.gr



*Danish office:*

**VIDEX DANMARK**

Hammershusgade 15

DK-2100 Copenhagen

Phone: (+45) 39 29 80 00

Fax: (+45) 39 27 77 75

[www.videx.dk](http://www.videx.dk)

videx@videx.dk



*Benelux office:*

**NESTOR COMPANY NV**

E3 laan, 93

B-9800 Deinze

Phone: (+32) 9 380 40 20

Fax: (+32) 9 380 40 25

[www.nestorcompany.be](http://www.nestorcompany.be)

info@nestorcompany.be



*Dutch office:*

**NESTOR COMPANY BV**

Business Center Twente (BCT)

Grotestraat, 64

NL-7622 GM Borne

[www.nestorcompany.be](http://www.nestorcompany.be)

info@nestorcompany.be

