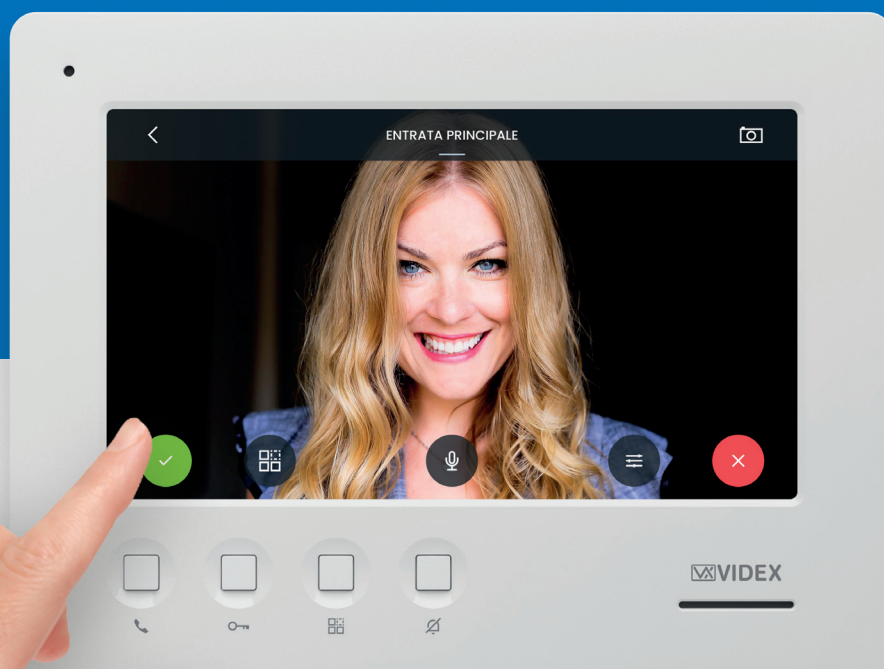


ENGLISH

2022



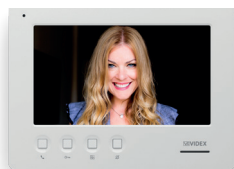
100% MADE IN ITALY

Index



IPure system

page 6



Videophones

6700
SERIES

6200
SERIES

6300
SERIES

page 8



Outdoor stations

4000
SERIES

page 12



Accessories

page 22



Intercoms

3000
SERIES

page 24



App and softwares

page 25

Applications

page 27



Although every effort has been made to provide accurate information, there may be technical or print errors in this catalogue. Videx reserves the right to make changes, corrections and improvements to such information at any time and without notice.





— 100% MADE IN ITALY —

The Italian Videophone

VIDEX is a unique company specialized in intercom and video intercom systems entirely Made in Italy, with over 30 years of experience, providing engineering expertise and attention to the installation needs in the residential and commercial sectors.

VIDEX's focus guarantees the most enhanced performing solutions, aimed to solve any installation need of professionals and system integrators who want to offer their expertises together with the high reliability that only a professional can provide, combined with the prestige of the innovations Made In Italy.

100% MADE IN ITALY

VIDEX is a video intercom system specialist, which has a production cycle entirely made in Italy, directly originating from the hills of Monte Giberto in the province of Fermo.



The entire process is strictly developed in Italy; starting from the project and design, through the supply chain of raw materials to the electronics manufacturing, guaranteeing quick deliveries of the orders, reliability and an innovative approach which make VIDEX devices so advanced.

Being the Manufacturers of all components, ensures continuity in the systems, durability and complete reliability because nothing is handled by third parties.

VIDEX supports the professionals in their field and they can rely on a specialized manufacturer that guarantees performances, stability and support throughout the complete life cycle of the product.

Italy has always been a leader in innovation and ideas in the electronics field and VIDEX has been leading the field of video door entry for over 35 years and in over 40 countries.

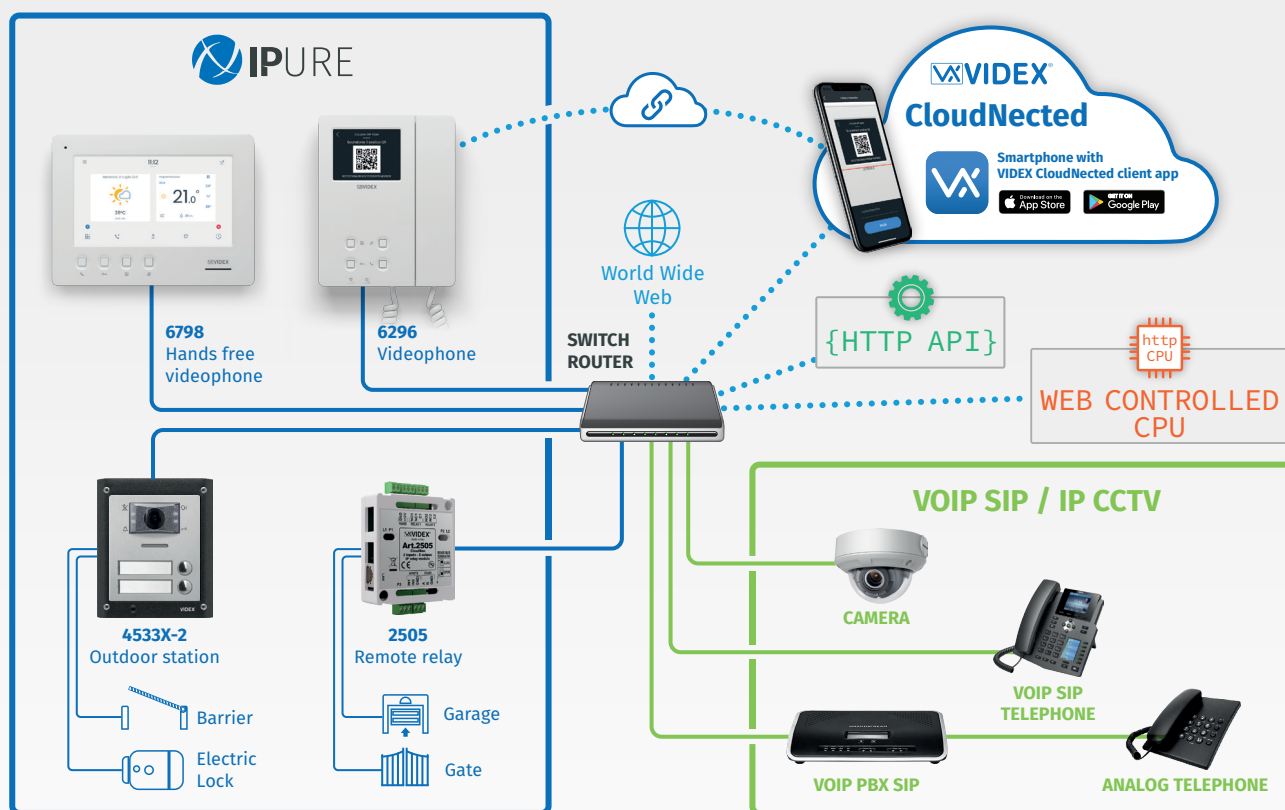
VIDEX, faithful to its focus, has always dedicated the research and the development of products which can inter operate with other devices to meet the installation needs of system integrators and professionals who want to install products which can be interfaced with third parties devices without limitations and as part of a wider system tailored to the customer's needs.



*The first and only PURE and OPEN IP
entirely Made in Italy*

It is a fully open and interoperable PURE IP: it supports the most widely used standard communication protocols and allows full integration with the third-party systems you want to install, unlike general brands that offer fake IP technology that integrates only proprietary devices.

With IPure you can create fully interoperable systems with third-party security and automation applications **without any constraints.**



IPure defines itself as pure and open because it guarantees **absolute interoperability with third-party systems and devices without any constraints**, with the full freedom to choose the network devices, security products and specialist automation systems that it prefers, to realize highly performing systems.

It is based on the standard IP network protocol (Internet Protocol), created to interconnect diverse networks for technology, performance and management, with the aim of making devices communicate using well known communication protocols and standards to maximize the user experience.

With IPure you can finally choose without any constraints the most specialized partners for other systems and offer the user a truly integrated solution of high level and performance.

THE IMPORTANCE OF INTEGRATION

The integration and dialogue between technological systems characterize everyday actions, simplifying them for greater comfort and security, and video entry is a fundamental part of this.

Video surveillance, intruder detection, home automation, are just some of the systems with which to integrate video intercoms, but the possibilities are endless and above all vary according to the needs of the user.

To achieve the desired result from the user, it is essential to be able to count on open protocols and technologies that allow complete dialogue between them, achieving full integration.

In fact, only through full integration between the systems currently present in homes, offices, industries, it is possible to take advantage of the most advanced features, such as automating functions or enhancing safety.

IPure is the only native open IP video entry system, so it can be interconnected with the main communication protocols: in this way it is possible to connect the video entry system with third-party devices and create the required integration of the systems.

No limit in the choice of third-party systems and importantly **no license constraints: IPure is an open IP available to the professional** to create total integration in the utmost freedom.

IPure is compatible as standard with all the protocols commonly used to interconnect third-party devices, essential for complete integration with security systems, home automation and smart building.

- **Proprietary system END-TO-END**
- **HTTP command protocol**
- **RTSP video stream protocol**
- **SIP communication protocol**

NO DISTANCE LIMITS AND MAXIMUM SCALABILITY

With IPure you can realize systems without **any distance limit** and count on the maximum scalability that guarantees the possibility of **further expansion** with external entrances, buildings, monitors and intercoms.

Just like the network infrastructure, you can choose the transmission medium on which to base the realization of your system:

- **UTP/STP**
- **Optical fiber**
- **Wi-Fi**

FTTH COMPATIBLE

IPure video entryphones are the first devices compatible with the new FTTH technology, this means that they can be installed in homes using the same network infrastructure, without additional wiring.

FTTH - Fiber To The Home

is the technology that brings the fiber home: the entire route from the central to the user's home is fiber optic.

This has a huge advantage in terms of data transmission that thanks to the use of fiber is much faster, efficient and reliable, and is also future-oriented because it can support all the features of new technologies to come.

In apartment blocks, thanks to an optical fiber infrastructure, it is possible to install common centralized systems, including video intercom, and make them interconnected with a transmission rate of up to 1gb per second, allowing maximum performance.

Videophones

6700 SERIES

Full-duplex hands-free device with 7" touchscreen TFT LCD monitor, a look that conveys elegance and cutting-edge technology and that blends in with any living environment thanks to the minimal footprint for surface installation.

Practicality is combined with design: rapid functions allow easy intuitive use and the large display allows for optimal supervision.



UNIQUE USER EXPERIENCE

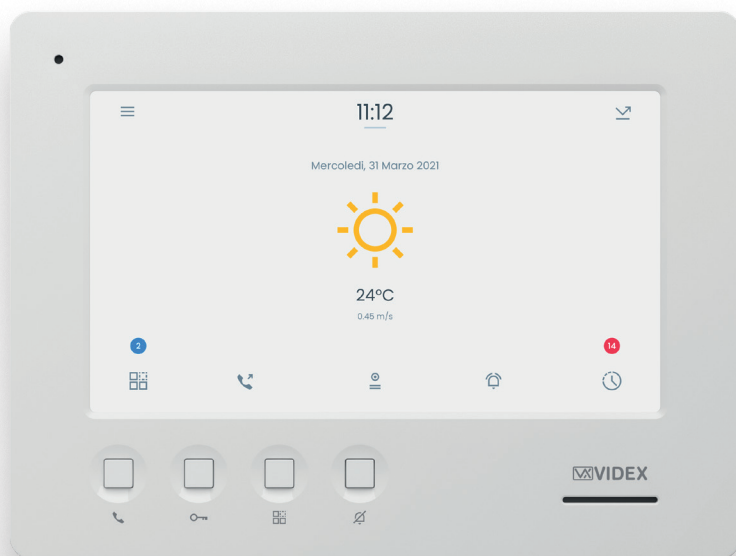
Easy and intuitive: the icons on the monitor are specifically designed to simplify the user's experience, as if they had always used a VIDEX video door entry system.

The icons and interface recall the main devices we are accustomed to using every day and are replicated identically on the Vindex App.

COMFORT IS STANDARD

The chronothermostat function with local and remote control.





Hands free



7" colour display



Touch screen



Integrated temperature sensor



Video memory



PoE



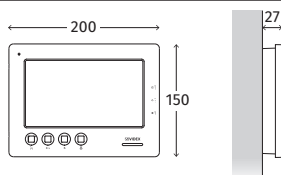
Desktop kit



	6798
Display	7" 800x480 colour LCD TFT capacitive multi-touch
Handset/Hands free	Hands free
Buttons No.	4
Buttons/Services ¹ (Default settings, all buttons programmable)	Service, Camera recall, Door-open/Intercommunicating call, Privacy
Privacy	Yes, timed
Operating system	Linux OS
Video streaming	H.246 and more
Memory board opt.	Yes, standard
Programmings	Service, Privacy duration, Number of rings, Intercommunicating call, Melody type, Door panels phonebook
Interfaces	10/100 Mbps Ethernet, Optional WiFi dongle connection
CCTV compatibility	Yes, IP-based with RTSP
Sensors	High quality integrated temperature and humidity sensors (Smart chronothermostat)
RJ-45 plug	Yes
Inputs	2 programmable active low inputs
Outputs	2 programmable dry contacts
Power supply	12Vdc - 650mA or, PoE 48V standard IEEE 802.3af Class 0
Mounting	Surface or tabletop (requires 67932)
Finishes	Satin white (standard), Black Rubber (/B)

¹ Some buttons are used for multiple functions.

² The operation of some LED's and the functions described may require additional cabling.



	67932
Specific for	6798
Size (mm)	116 x 116 x 190
Finishes	Brushed stainless steel
Material	3mm thickness stainless steel

6200 SERIES

Elegant and compact design 3,5" monitor with handset distinguish 6200 Series videophones



3.5" colour display



Touch screen



Video memory



PoE



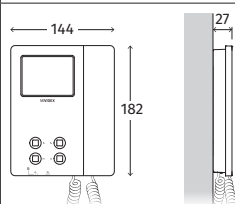
Desktop kit



	6296
Display	3.5" 320x240 colour LCD TFT touch screen
Handset/Hands free	Handset
Buttons No.	4
Buttons/Services¹ (Default settings, all buttons programmable)	Service, Camera recall, Door-open/Intercommunicating call, Privacy
Privacy	Yes, timed
LEDs²	Lost call, Privacy ON
Memory board opt.	Yes, standard
Adjuments	Call tone volume, Brightness
Programmings	Service, Privacy duration, Number of rings, Intercommunicating call, Melody type, Door panels phonebook
RJ-45 plug	Yes
Inputs	2
Outputs	2
Power supply	12Vdc - 300mA or PoE 48V standard IEEE 802.3af Class 0
Mounting	Surface or tabletop (requires 62932)
Finishes	Satin white (standard), Black Rubber (/B)

¹ Some buttons are used for multiple functions.

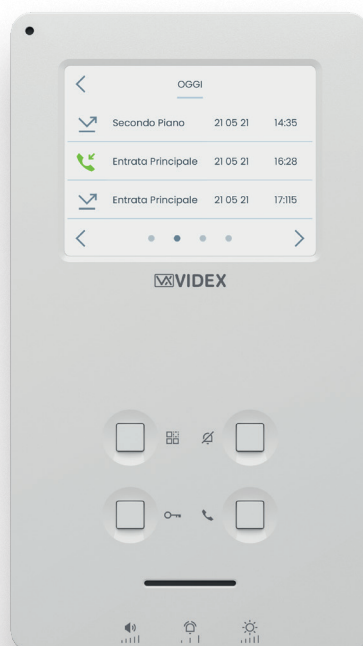
² The operation of some LED's and the functions described may require additional cabling.



	62932
Specific for	6296
Size (mm)	116 x 204 x 134
Finishes	Brushed stainless steel
Material	3mm thickness stainless steel

6300 SERIES

Minimal and appealing, the 6300 Series hands free videophones are equipped with full-duplex speaker that guarantees a high quality sound output



Hands free



3.5" colour display



Touch screen



Video memory



PoE



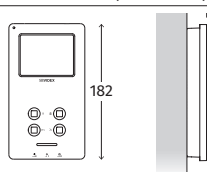
Desktop kit



	6398
Display	3.5" 320x240 colour LCD TFT touch screen
Handset/Hands free	Hands free
Buttons No.	4
Buttons/Services ¹ (Default settings, all buttons programmable)	Service, Camera recall, Door-open/Intercommunicating call, Privacy
Privacy	Yes, timed
LEDs ²	Lost call, Privacy ON
Memory board opt.	Yes, standard
Adjuments	Speech volume, Call tone volume, Brightness
Programmings	Service, Privacy duration, Number of rings, Intercommunicating call, Melody type, Door panels phonebook
RJ-45 plug	Yes
Inputs	2
Outputs	2
Power supply	12Vdc - 300mA or PoE 48V standard IEEE 802.3af Class 0
Mounting	Surface or tabletop (requires 63932)
Finishes	Satin white (standard), Black Rubber (/B)

¹ Some buttons are used for multiple functions.

² The operation of some LED's and the functions described may require additional cabling.



	63932
Specific for	6398
Size (mm)	116 x 204 x 120
Finishes	Brushed stainless steel
Material	3mm thickness stainless steel

Outdoor stations

4000 SERIES

The 4000 Series outdoor stations redefines the standard modular solution: extremely robust, easy to install and ultra compact.

The tech design makes it ideal in any installation solution, from residential to large building structures, private and industrial.



MODULAR: FULLY CUSTOMISABLE FOR EACH INSTALLATION

Create solutions for up to 42 audio and audio/video users with the addition of access control using up to 9 modules.

The digital call panels are characterized by its compact size, unique on the market, occupying only 2 modules.

FEAR NO EXTREME CONDITIONS

The Series 4000 modular control panel has been designed for extreme environmental installations and resistant to thermal variations in some environments, without compromising in any way the perfect operation and performance. The control panel resists the constant cold down to a temperature of -20° C and high temperatures of +60° C.

AISI 316 STEEL: DESIGNED TO LAST OVER TIME*

The 4000 series push-buttons are designed to last over time and designed for critical installations subject to atmospheric and marine environments.

The modules are made of stainless steel satin AISI 316 (marine grade) which gives durability and strength.

IK07: ROBUST WITH ELEGANCE*

The modular push-buttons 4000 series are vandal-resistant with impact resistance IK07 grade.

This feature gives the possibility to be installed in environments where the main requirement is the anti-vandalism without sacrificing a minimal and pleasant appearance.

IP65: ABSOLUTE PROTECTION

The neoprene gasket present in the frame modules makes the buttons sealed to the wall with perfect adherence and protection even on uneven surfaces.

IP65 grade makes it unnecessary to install shields to protect against rain.

*Only available for Matte stainless steel finish.

SMALL SIZE: FLUSH OR SURFACE MOUNTED

The 4000 series anti-vandal push-button panel in versions with traditional modules or keypad surpasses all others for its small size.

The installation of the modules is quick and easy, the insertion takes place from the front in a simple and intuitive way, ensuring the modules can't be pushed into the frame during attempted vandalism.

REDUCED INSTALLATION AND MAINTENANCE TIMES

The frame includes side hinges to enable easy access, installation and maintenance by the installer.

All modules of the 4000 Series Analogue Push Button Panel use flat IDC cables that allow a quick installation by drastically reducing working time.

The cable CFL17 (17 cm) is supplied with all modules while the cable CFL45 (45 cm) should be ordered separately in case the button modules are in multiple columns.

HIGH RESOLUTION COLOUR WIDE ANGLE CAMERAS

All audio/video modules use high resolution CMOS wide angle autofocus colour cameras: 720p (1Mpx).

The digital autofocus technology with wide viewing angle and the 4 white LEDs allow the viewing of a very large area, up to 80 degrees for the vertical angle and 170 degrees for the horizontal with a very high image quality and sharpness even at night.

VISUAL AND ACOUSTIC SIGNALLING

The audio and audio/video modules are equipped with 4 visual signaling LEDs for the deaf: busy, call in progress, open communication and door opening. Audible announcements for the visually impaired indicate the current call progress and status.

OPTIONAL RFID READER

The audio and audio/video modules can have an optional RFID proximity key reader for configuring up to 1,000 tag keys or ISO3 card for the activation of a door or gate. The keys are configured via PC.

For the digital panel the RFID reader is standard allowing a fob or card to be used by each user.



EXTENDED MICROPHONE

All audio and audio-video modules are equipped with an extended microphone that is housed separately from the module in the bottom of the 4000 Series frame. In this way the audio balance is perfect and problems of larsen effect or amplification are eliminated, for example when the unit is installed in noisy environments.

SIMPLIFIED CONFIGURATION

The 4000 series push-buttons are easy and intuitive for configuration via the IPure WIZARD software.

PoE POWER SUPPLY

All electric door modules and digital panels provide power through third-party PoE switches or optional 12Vdc power supply.

COMPATIBILITY

The 4000 Series is the first and only modular push-button panel to support IP OPEN technology, so it is compatible with the main protocols to interconnect with third-party devices without any limit and without license restrictions.

1-module plate finishes



Matte stainless steel

AISI 316 stainless steel



IK07 vandal resistant



IP65 protection degree

Add /M to the product code



Anodized aluminum



IP65 protection degree

Add /A to the product code

Digital call panel plate finish

Brushed stainless steel



IK09 Vandal resistant



IP65 protection degree



Speaker units modules with integrated camera



Wide Angle camera



Built-in proximity key reader
Only for 4534X-0, 4534X-1 and 4534X-2



IDC connector



PoE



4534-0



4534-1



4534-2



4534X-0

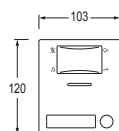


4534X-1



4534X-2

Audio/Video	Audio/Video					
Camera and illumination LED's	CMOS Wide angle camera (80° vertical, 170° horizontal) White light illumination LED's					
Video codec	H.264					
Supported resolutions	1280x720, 640x480, 352x288 (CIF), 320x240					
Visual signalling LED	Busy, Ring, Speak, Door Open					
Audio codec	G.711 μ -law, A-law					
Sampling frequency	8kHz					
Supported protocols	SIP 2.0, RTSP, HTTP					
Name plate/Back light	-	Yes/Blue				
Integrated proximity access	-	125kHz H4102 10.000 keys (through PC programming)				
Built-in buttons	0	1	2	0	1	2
Max buttons	42					
Programmings and adjustments	Conversation time, Door relays time, Relay operating mode, Digital regulations					
Relays	2 dry contacts (C/NO/NC Max 24Vac/dc 2A)					
LAN	10/100BASE-TX with Auto-MDIX, RJ45					
IDC connector	Yes					
PTE input	2 programmable					
Finishes	Matte stainless steel (/M), Anodized aluminium (/A)					
Mounting	Modular 4000 series - 1 module					
Power supply	12Vdc - 400mA or PoE 802.3af (Class 0 - 12.95W)					
Working temperature	-20° / +60°C					



Speaker units modules



Built-in proximity key reader

Only for 4504X-0, 4504X-1 and 4504X-2



IDC connector



PoE



4504-0



4504-1



4504-2



4504X-0



4504X-1



4504X-2

	4504-0	4504-1	4504-2	4504X-0	4504X-1	4504X-2
Audio/Video	Audio					
Visual signalling LED	Busy, Ring, Speak, Door Open					
Audio codec	G.711 μ -law, A-law					
Sampling frequency	8kHz					
Supported protocols	SIP 2.0, HTTP					
Name plate/Back light	-	Yes/Blue				
Integrated proximity access	-			125kHz H4102 10.000 keys (through PC programming)		
Built-in buttons	0	1	2	0	1	2
Max buttons	42					
Programmings and adjustments	Conversation time, Door relays time, Relay operating mode, Digital regulations					
Relays	2 dry contacts (C/NO/NC Max 24Vac/dc 2A)					
LAN	10/100BASE-TX with Auto-MDIX, RJ45					
IDC connector	Yes					
PTE input	2 programmable					
Finishes	Matte stainless steel (/M), Anodized aluminium (/A)					
Mounting	Modular 4000 series - 1 module					
Power supply	12Vdc - 400mA or PoE 802.3af (Class 0 - 12.95W)					
Working temperature	-20° / +60°C					

Button expansion modules (single and double row)



	4043	4044	4045	4042D	4043D	4044D	4045D
Buttons	3	4	5	4	6	8	10
Back light	Blue						
IDC connector	Yes						
Button connection terminals	16 pin IDC connector						
Finishes	Matte stainless steel (/M), Anodized aluminium (/A)						
Mounting	Modular 4000 series - 1 module						
Power supply	12 Vdc +/- 10%						
Working temperature	-20° / +60° C						

Blank and information modules



4840



4846

Description	Blank module	Information module
Back light	-	Blue
Opening size (mm)	-	83 x 104
Information card size (mm)	-	96 x 113
Finishes	Matte stainless steel (/M), Anodized aluminium (/A)	
Mounting	Modular 4000 series - 1 module	
Power supply	-	12 Vdc
Working temperature	-20° / +60° C	

Codelock modules

**4901****4902**

Relay number, contacts and voltages	3 Dry contacts, Max 24Vac/dc 2A	2 Dry contacts, Max 24Vac/dc 2A
PTE input	Yes, for relay 1 & 2	
Codes	3	1000
Operation	Standalone	Standalone/Connected
Programming	Keypad	Keypad/PC
Interfaces	-	RS-485, USB
Keypad backlight	Blue. Programmable	
Finishes	Matte stainless steel (/M), Anodized aluminium (/A)	
Mounting	Modular 4000 series - 1 module	
Power supply	12/24 Vac/dc	
Working temperature	-20 +60° C	

Proximity key readers modules

**4850****4850P**

Relay number, contacts and voltages	1 Dry contacts, Max 24Vac/dc 2A	
PTE input	Yes	
Keys	100	1000
RFID frequency	125kHz	
Operation	Standalone	Standalone/Connected
Programming	Unit buttons	Unit buttons/PC
Interfaces	RS-232/RS-485	
Finishes	Matte stainless steel (/M), Anodized aluminium (/A)	
Mounting	Modular 4000 series - 1 module	
Power supply	12/24 Vac/dc	
Working temperature	-20 +60° C	

Digital call panels



Wide Angle
camera



Built-in proximity
key reader



IK09
Vandal resistant



IP65
Protection grade



PoE



Digital call panels


4514V

4514RV

4514V/F

4514RV/F

Audio/Video	Audio/Video			
Camera and illumination LED's	CMOS Wide angle camera (80° vertical, 170° horizontal) White light illumination LED's			
Video codec	H.264			
Supported resolutions	1280x720, 640x480, 352x288 (CIF), 320x240			
Audio codec	G.711 µ-law, A-law			
Sampling frequency	8kHz			
Display/Backlight	Graphical 128x64px/Blue			
Integrated proximity access	Yes 125Khz H4102 10000 keys (through PC programming)			
Keypad buttons	18	15	18	15
Repertory name facility	No	Yes	No	Yes
Speech board opt	Standard			
Interfaces	RS-485/WIEGAND			
Programming	PC via VX IP Wizard			
Adjustments	Microphone and loudspeaker volume			
Apartments/Users/Codes	10000/10000/10000			
Access control	User code/Proximity key/User code + proximity key			
Relays	2 dry contacts (C/NO/NC Max 24Vac/dc 2A)			
RJ-45 plug	Yes			
Supported protocols	SIP 2.0, RTSP, HTTP			
PTE/TRD inputs	Yes (2)			
Plate type	AISI 316 stainless steel, Vandal resistant IK09, IP65 Protection Grade			
Finish	Brushed stainless steel			
Mounting	Modular 4000 Series 2-module		Flush	
Power supply	12Vdc - 400mA or PoE 48V standard IEEE 802.3af Class 0			
Working temperature	-20° / +60°C			
Size (mm)	-		135 x 280 x 47	
Flush back box size (mm)	-		120 x 263 x 45	

Blank and information modules

VANDAL RESISTANT LINE


VR4KBLM

VR4KIFM

Description	Blank module	Information module
Back light	-	Blue
Opening size (mm)	-	52 x 85
Information card size (mm)	-	62 x 100
Plate type	IK09 vandal resistant	
Finish	Brushed stainless steel	
Mounting	Modular 4000 series - 1 module	
Power supply	-	12 Vdc
Working temperature	-20° / +60°C	

Front support

The front support is available in 1, 2 and 3 module versions and includes:

- The flush back box.
- The module support frame is provided with a waterproof gasket and security screws for fixing to the flush back box.
- Spacers to connect the back boxes together when the outdoor station requires more than 3 modules.



	4851	4852	4853
Modules	1	2	3
Mounting	Flush		
Protrusion (mm)	17		
Recessed depth (mm)	45		
Size (mm)	135 x 160 x 17	135 x 280 x 17	135 x 400 x 17
Columns	1		
Back box	120 x 143 x 45	120 x 263 x 45	120 x 383 x 45
Finishes	Gun metal grey (standard), Aluminium painting (/AP)		

Rainshields for front support



	4871	4872	4873	4874	4876	4879
Modules	1	2	3	4	6	9
Mounting	Flush					
Protrusion (mm)	35					
Size (mm)	157 x 164 x 35	157 x 284 x 35	157 x 404 x 35	292 x 284 x 35	292 x 404 x 35	427 x 404 x 35
Columns	1			2		3
Finishes	Gun metal grey (standard), Aluminium painting (/AP)					

Surface mounting unit

The surface mounting units are available in 1, 2, 3, 4, 6 and 9 module versions which include:

- The surface box to fix to the wall with the screws provided.
- The module support frames are provided with waterproof gaskets and security screws. When surface mounting 4, 6 or 9 module versions, the support frames provided are 2 x two module, 2 x three module and 3 x three module versions.



4881 **4882** **4883** **4884** **4886** **4889**

Modules	1	2	3	4	6	9
Mounting	Surface					
Protrusion (mm)	44					
Size (mm)	135 x 160 x 44	135 x 280 x 44	135 x 400 x 44	270 x 280 x 44	270 x 400 x 44	405 x 400 x 44
Columns	1			2		3
Finishes	Gun metal grey (standard), Aluminium painting (/AP)					

Rainshields for surface mounting unit



4891 **4892** **4893** **4894** **4896** **4899**

Modules	1	2	3	4	6	9
Mounting	Surface					
Protrusion (mm)	62					
Size (mm)	157 x 164 x 62	157 x 284 x 62	157 x 404 x 62	292 x 284 x 62	292 x 404 x 62	427 x 404 x 62
Columns	1			2		3
Finishes	Gun metal grey (standard), Aluminium painting (/AP)					

Accessories

2505 IP relay module

Art.2505 is an IP relay with two built-in relay and two active low inputs plus serial interface RS-485 for interfacing with other automation devices.

Thanks to the PoE feature, the relay allows to make remote services with the only requirement of an ethernet cable.

It allows additional remote services, the door panel relay replication (i.e. for safety connection of locks) and bell repeater operating mode which allows to connect additional sounder or blinker (i.e. for deaf persons).

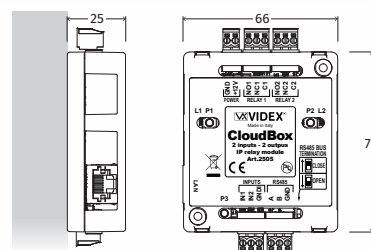
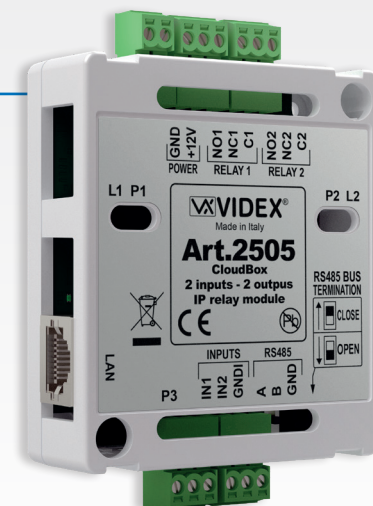
Besides, "CLOUDBOX" mode allows the user to use Videx CloudNected APP without a videophone.

Main features

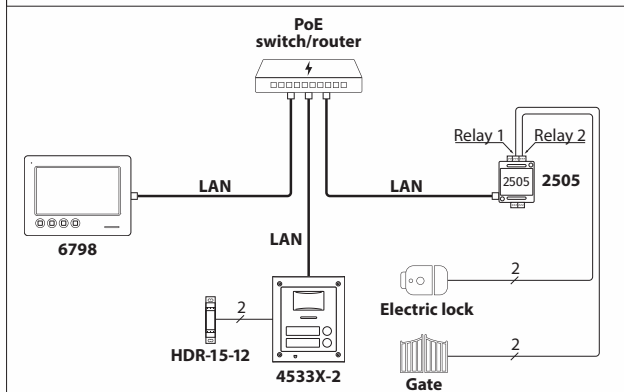
- 10/100 Mbit Ethernet interface
- 12Vdc power supply or PoE
- Two dry contact (C,NC,NO) relays operating as standard, latch or pulse mode
- 2 active low programmable inputs
- RS-485 interface for home automation purposes
- Encrypted communication
- VIDEX MAC addresses
- Connection via LAN, WAN or private network
- RJ45 ethernet connection
- Videx app available for tablets and smart phones
- Two direct relay activation buttons
- Boot loader mode (for firmware update recovery purposes)
- Replication mode "door relay"
- Sounder repeater operating mode
- Lift control operating mode*
- CLOUDBOX operating mode

	2505
Device type	Ethernet relay
Relays	2 dry contacts (C/NO/NC Max 24Vac/dc 0.4A)
Inputs	2 (Active Low)
Programmings	Activation Time Relay Operating Mode (Standard, Sounder Repeater Lift mode*)
Mounting	Surface wall mount
Power supply	12Vdc - 150mA or PoE 48V standard IEEE 802.3af Class 0

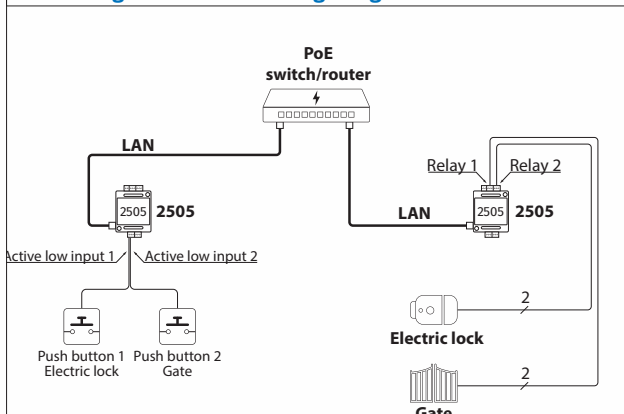
*In development stage at the time of printing of this catalogue



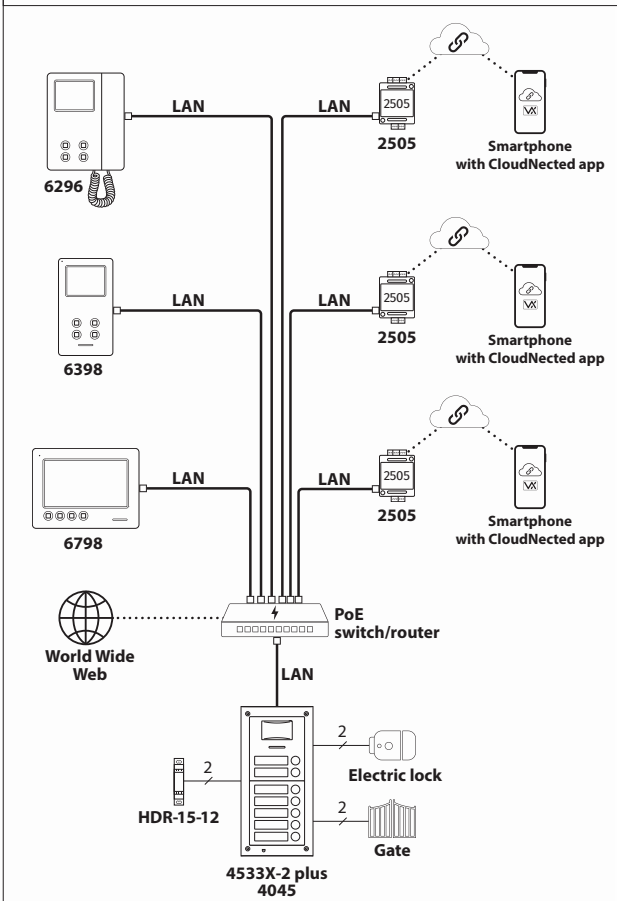
Doors and gates activation through a relay which is separate from the outdoor station



Doors and gates activation through long distance remote buttons



CloudBox mode

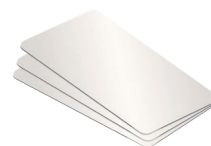


**HDR-15-12**

Description	Power supply unit
Input voltage	85~264Vac
Output voltages	12Vdc / 1.25A
Housing	1 module A Type DIN box
Mounting	DIN bar
Dimensions (mm)	17.5 x 90 x 54.5

**DNGL**

Description	Dongle Wi-Fi for 6798
Connection	USB

**955/T****955/C**

Description	Videx proximity fob	Videx proximity card
Code	32bit	
Reading distance	Up to 20mm (using Videx readers)	Up to 50mm (using Videx readers)
Material	Plastic	PVC
Colour	Blue and grey	Gloss white
Dimensions	36mm diameter 5mm thickness	Badge size ISO standard 85. 6x 54x 0.76mm
Note	Personalized with Videx logo	Compatible for silk screen printing

Intercoms

3000 SERIES

The 3000 series surface mount intercom is designed primarily for low and high-rise private developments and individual houses where an attractive and low cost functional intercom is desirable.

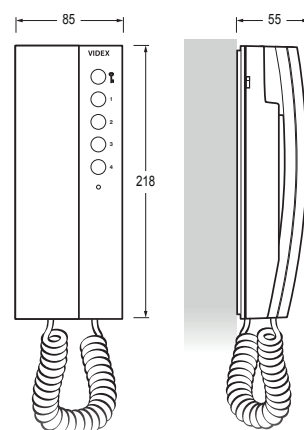


PoE



3196

Handset/Hands free	Handset
Buttons No.	5
Buttons/Services ¹ (all buttons programmable)	Service, Panel recall, Door-open, Intercommunicating call, Privacy, SIP call, DTMF
Privacy	Yes, timed
LEDs	Status LED, Privacy ON
Adjustments	Call tone volume
Programmings	Service, Privacy duration, Number of rings, Intercommunicating call, Melody type
SIP compliant	Yes
Inputs	2
Mounting	Surface
Power supply	12Vdc -250mA or PoE 48V standard IEEE 802.3af Class 0
Finishes	White
Desktop kit	Available



Videx Cloudnected App



A complete and intuitive application to manage video intercoms remotely and a cloud full of services for the user and the installer.

Videx Cloudnected App allows the user to always stay in touch with their home by managing the videophone directly from any smart device: automatically, it replicates exactly the same properties and functions as the videophone to which it is associated.

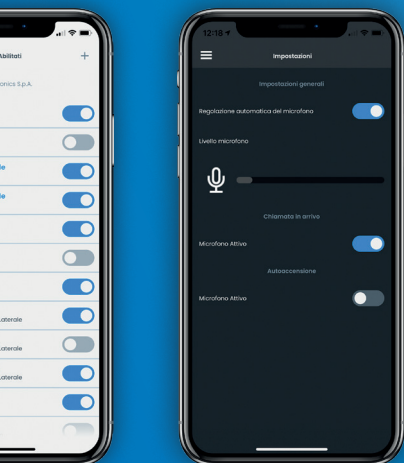
In this way you can manage calls, activate services, verify who has been calling you... Inside and out, with extreme simplicity.



Immediately connected without any configuration

Videx Cloudnected App does not require any configuration.

Just register your profile and scan the QR code with the smartphone camera, so the app will associate to your video intercom inheriting in automatically all properties and functions.

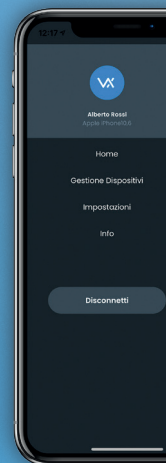
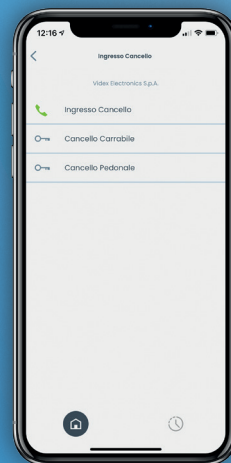
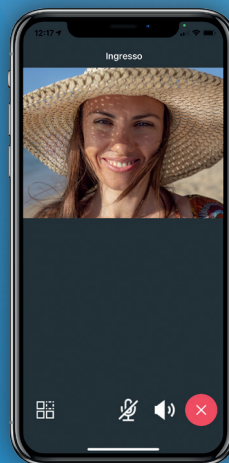


Easy and intuitive

The app uses familiar icons that we are all used to using on a daily basis in our mobile devices to ensure extreme clarity and ease of use.

In addition, all devices and services are displayed with custom names freely chosen during installation, to identify at a glance what you want to operate.

In this way you will be sure to offer your customers a simple but flexible solution that will be second nature to use.



Discover what you can do with the Videx Cloudnected App



Answer calls when you're out of the house



Open the gate without remote control



Manage multiple apartments and facilities



See what happens near your home



Ability to disable all functions



Softwares

VX IP Wizard

The software for Windows that allows you to configure all the devices of the IPure system.

For outdoor stations you can set:

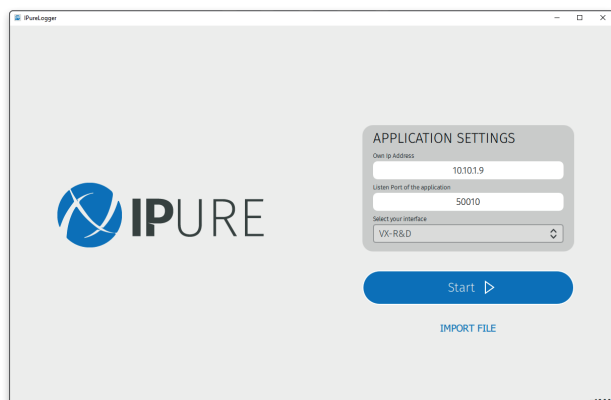
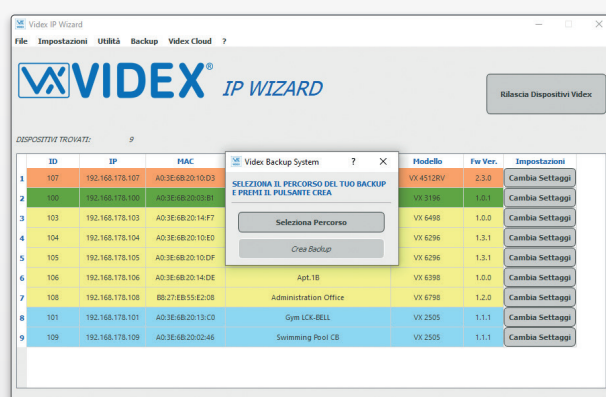
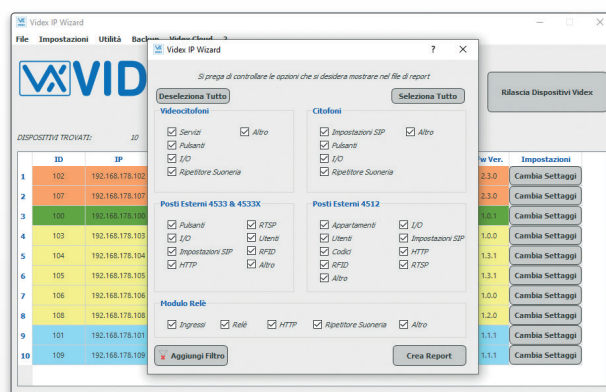
- Calls
- Inputs and outputs
- Users
- Proximity fobs
- Access codes
- SIP / RTSP / HTTP parameters

For indoor stations you can set:

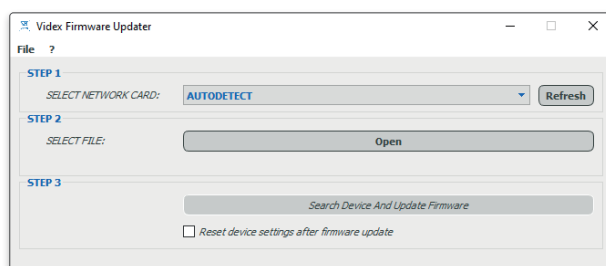
- Ring numbers and melody type
- Interface style and language
- Buttons functions
- Inputs and outputs
- Intercommunication
- Auto-recall
- Services
- SIP parameters

For Cloudbox you can set:

- Action at receiving call
- Inputs and outputs
- HTTP parameters
- Operating mode



IPure
Logger



Firmware
updater

	VX IP Wizard	Videx Firmware updater	IPure Logger
Description	PC software. Wizard configuration software for IPure system.	PC software. Software for firmware updates.	PC software. View and manage messages from devices in the system.
Operating systems	MS Microsoft Windows® 7 or higher		MS Microsoft Windows® 7 or higher macOS 11.6 or higher

To download the programming software wizard and obtain the latest firmware and manuals please visit the following website and register

<https://service.videx.it>

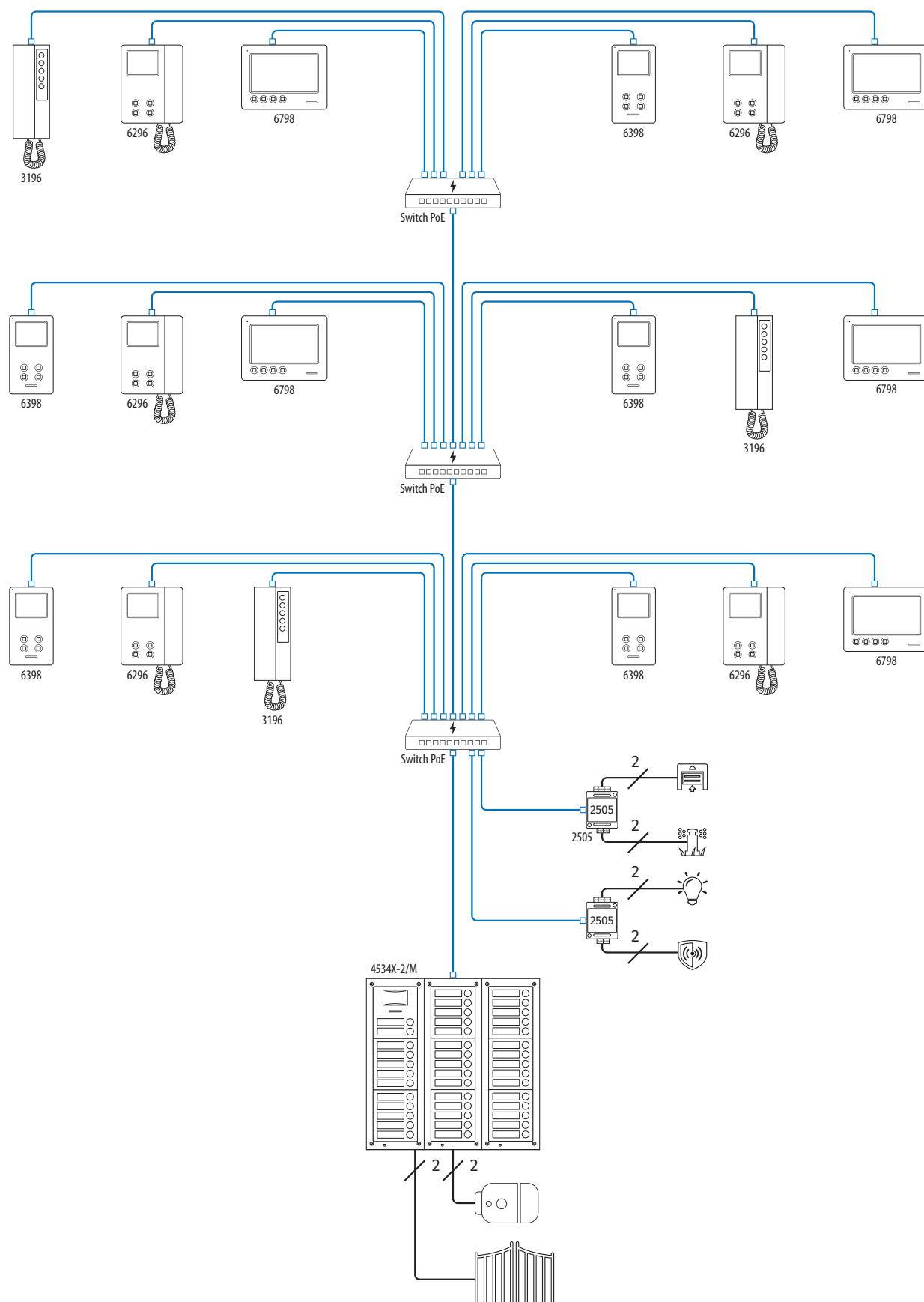


SLD_IPure_V_001

IPure system with 2505 Ethernet
relays for shared automation.

POE switches can be distributed
throughout the building or contained in
a central location as long as the distance

from POE switch to apartment device is
within 100 meters.

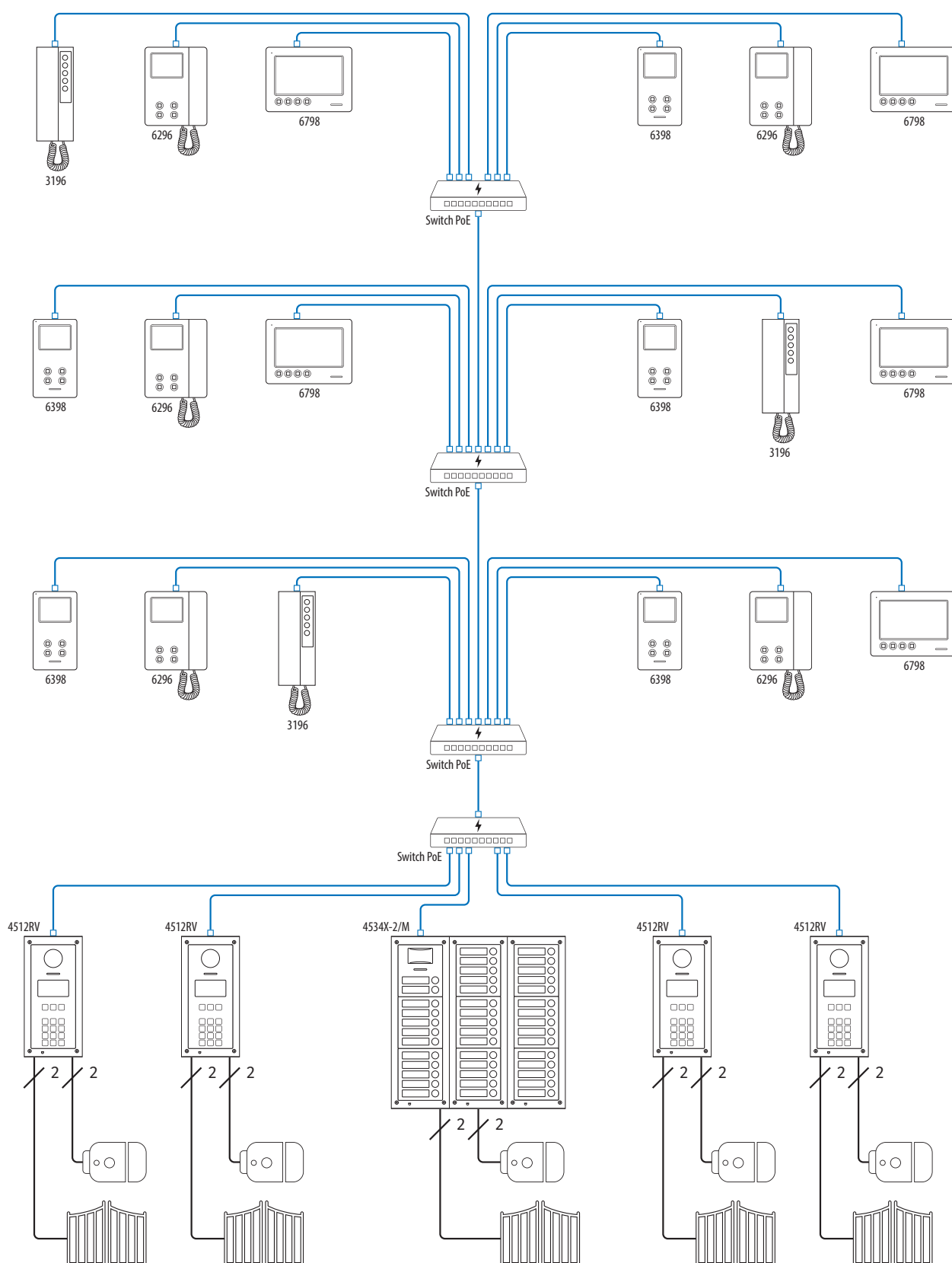


SLD_IPure_V_003

IPure system with multiple entrances

The diagram shows five entrances, but there are no limits. Wherever there is an ethernet socket you can connect an external device and, if the socket is also PoE, you do not need to power it. In the presence of several external device calls

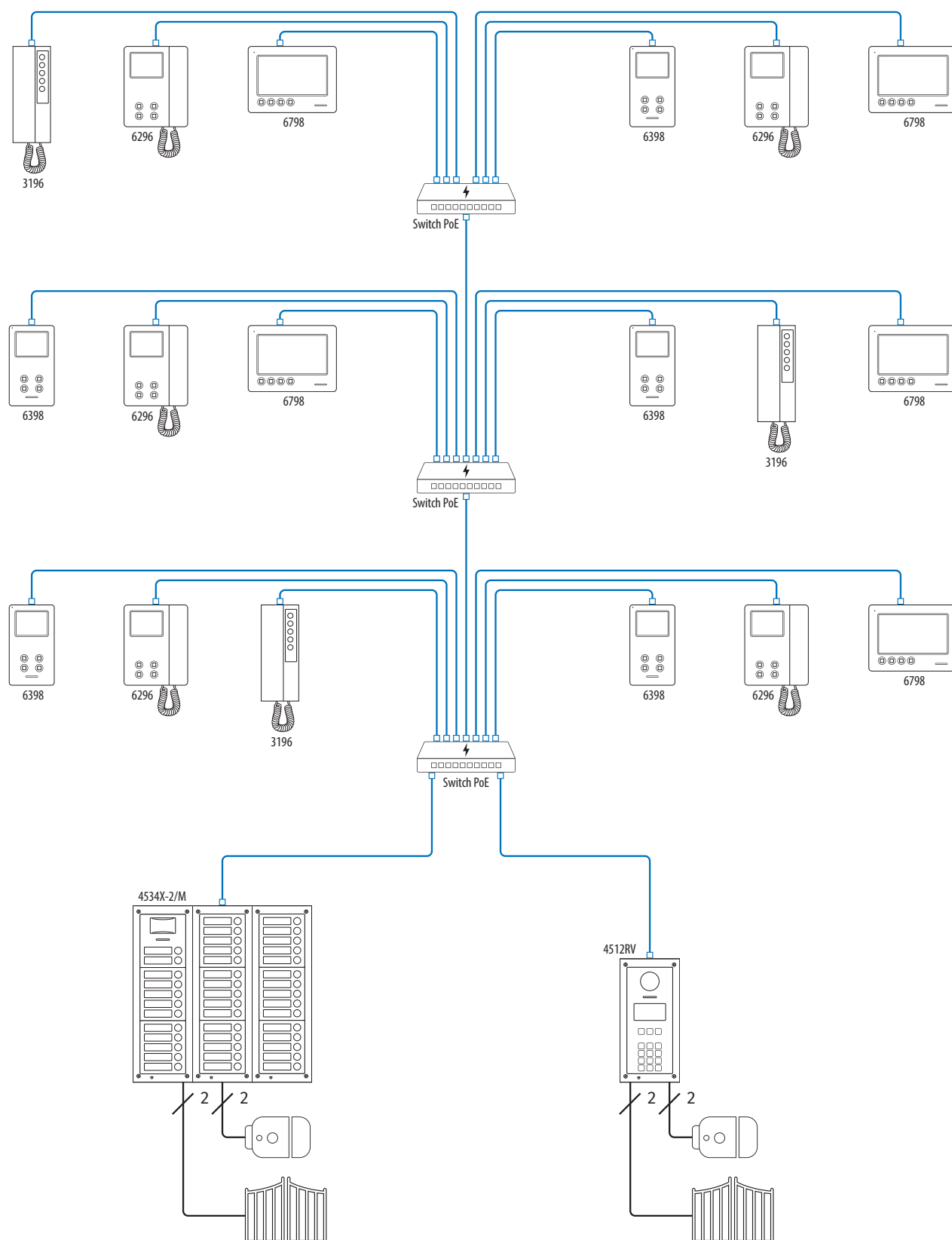
can be competing, therefore, any external device, as long as you call a video intercom not already in conversation, can make a call at the same time. i.e multiple lines of communication.



SLD_IPure_V_004

IPure system with two entrances

Also in this case, the two outdoor stations can work simultaneously as long as they call two different indoor stations.

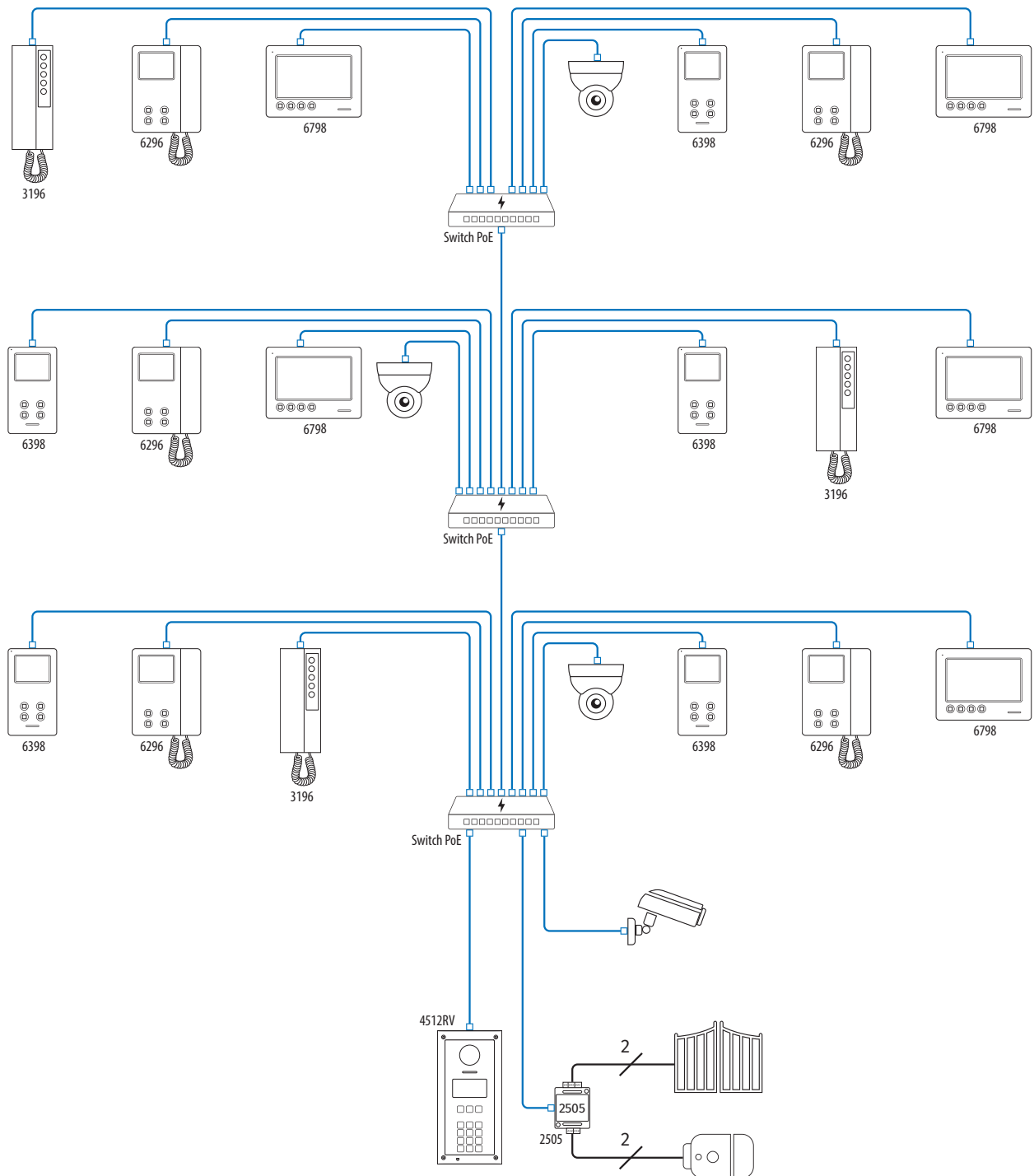


SLD_IPure_V_005

IPure system with single entrance and security cameras

7" videophones can display third party security camera's feeds compatible with the RTSP protocol. In the example, the relays for the opening of the gates and doors are separate from the entrance panel using a 2505 relay which can be installed in a secure location adding greater security to the system (Secured By Design)

panel using a 2505 relay which can be installed in a secure location adding greater security to the system (Secured By Design)

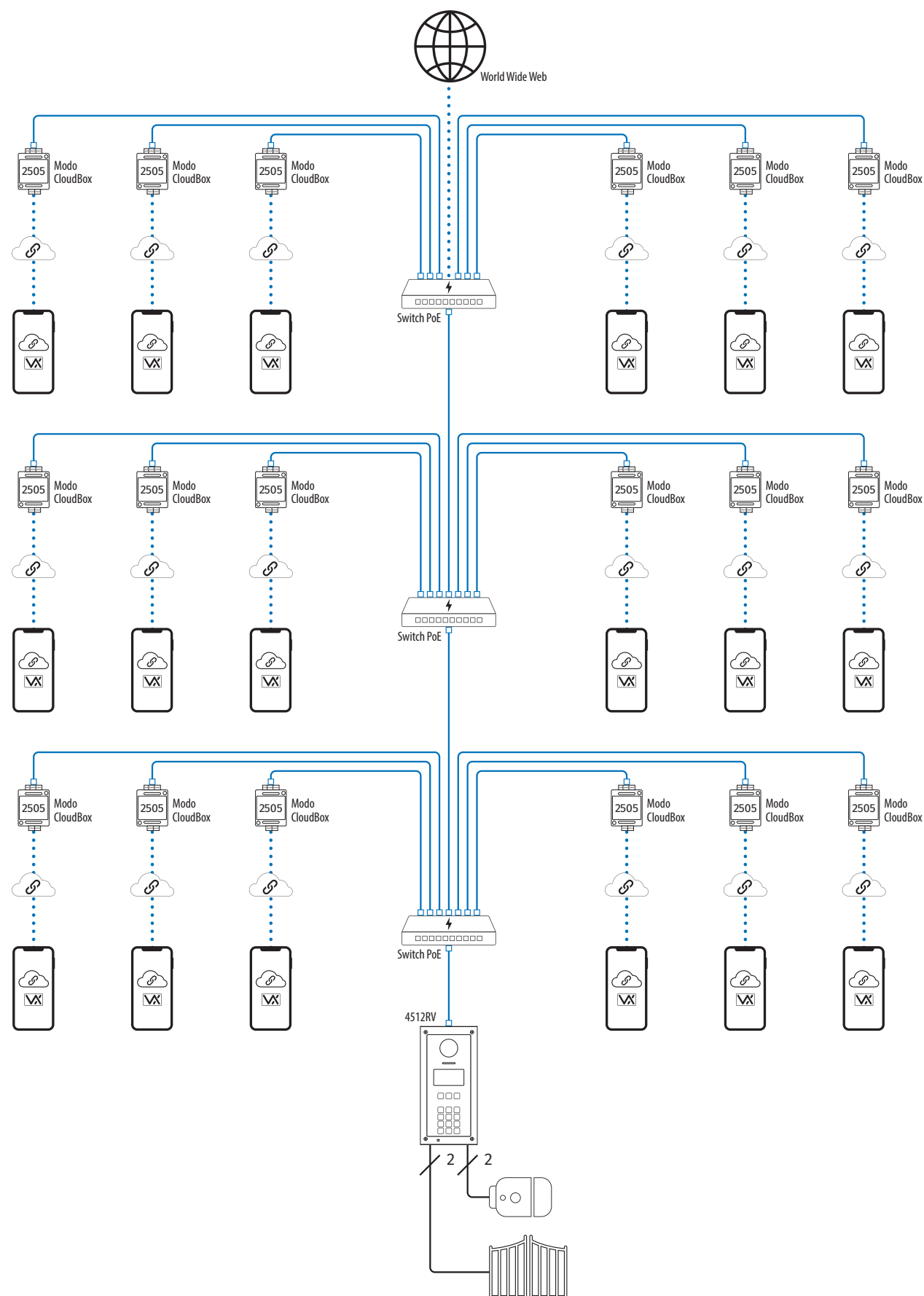


SLD_IPure_V_006

IPure system with single entrance

Show the usage of the 2505 relay in "Cloud box" mode. With this mode, no video

intercom is required to answer incoming calls, but the APP can be used.

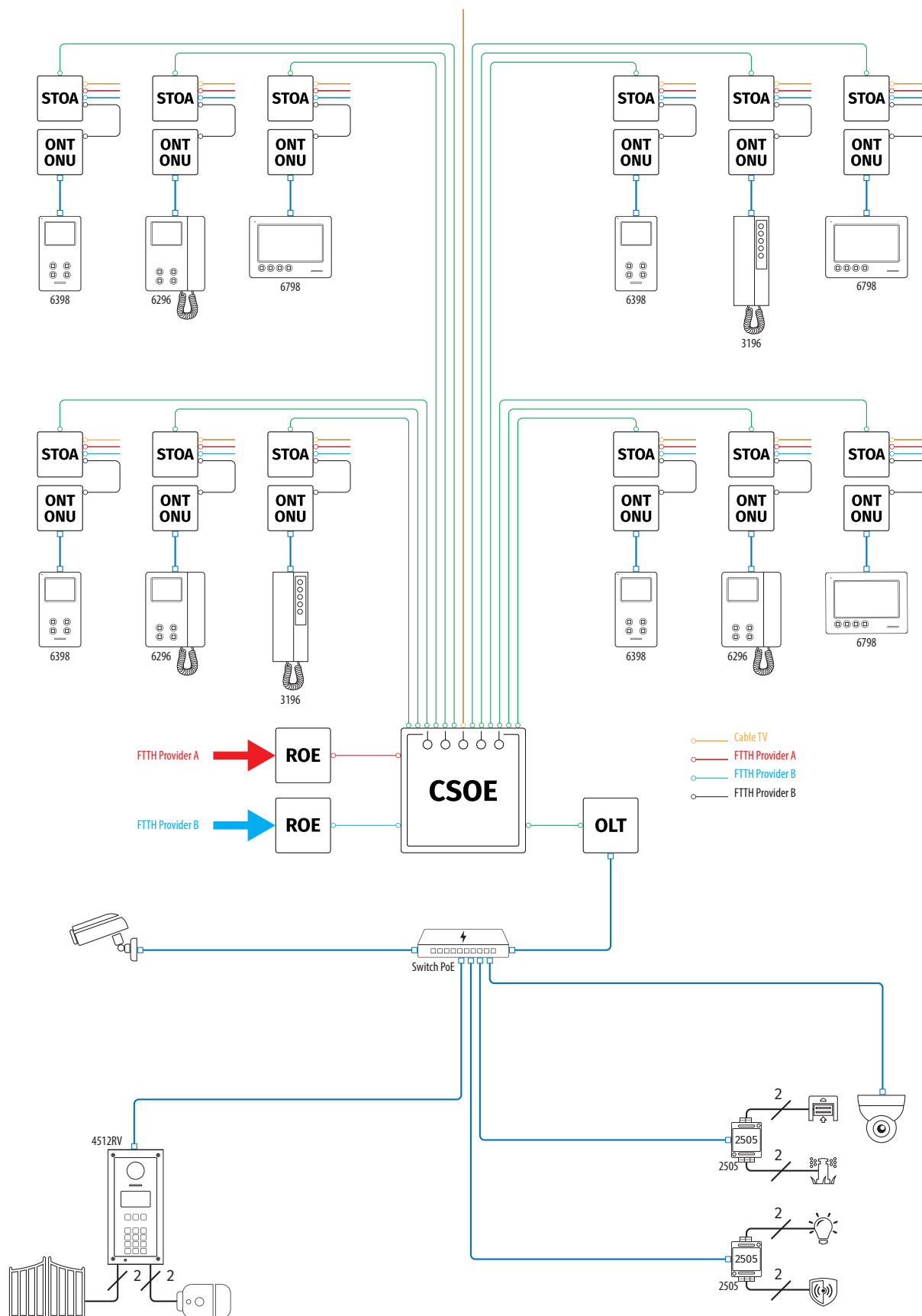


SLD_IPure_V_009

IPure system over a GPON network

In a building using GPON network for centralized services like cable TV, internet connection etc. the same network can be used for IPure video door entry system. The OLT unit converts the active network

to the passive network then, inside each apartment, the ONT or ONU unit revert the passive network to the active one. On a GPON network can be connected any IPure system layout.



Terms and conditions of sale

1) Definitions

In this document the following words shall have the following meanings:

- a. "Buyer" means the organisation or person who buys Goods;
 - b. "Goods" means the items to be supplied to the Buyer by the Seller;
- Videx Electronics S.p.A. will be hereafter called "Videx".

2) General Conditions

Any variation to these Terms and Conditions (including any special terms and conditions agreed between the parties) shall be inapplicable unless agreed in writing by Videx.

3) Orders

Any order sent to Videx implies the Buyers acceptance of all the conditions listed in this document.

Purchases are finalized when the Buyer receives the order confirmation from Videx.

After this confirmation, the order cannot be cancelled unless Videx explicitly agrees in writing.

4) Prices

Price list is to be considered variable as it is subject to variations in production costs which are outside of the control of Videx. Unless otherwise agreed in writing, prices shall be considered ex-works.

5) Retention of Title

Title to the Goods shall not pass to the Buyer until Videx has been paid in full for the Goods.

6) Returned Goods

Returned Goods will not be authorized unless agreed in writing by Videx. Authorized Goods will be accepted only if intact and in their original packaging. Goods not included in the price lists in force will not be accepted.

In case of accepted returned Goods a credit note, corresponding to the invoiced amount reduced by 30%, will be issued.

7) Liability

- a. Videx will not be held responsible for damages arising from incorrect installations which do not comply with the specifications provided or for installations carried out by third parties, or for works carried out by third parties on behalf of the Buyer;
- b. Videx will make good, by repair or by supply of a replacement, defects which, under proper use, appear in the Goods within a period of 12 months after the Goods been sold and arise solely from faulty design, materials or workmanships; always provided that the defective parts have been acknowledged and so declared by Videx;
- c. Videx does not acknowledge any compensation for direct or indirect damages;
- d. All goods must be returned to Videx at Buyer's own expenses, until such time as these are tested Videx admits no liability for their condition;
- e. Videx admits no liabilities for defective parts caused by wear and tear;
- f. All Goods returned for repair must be accompanied by a note in writing stating the nature of the defect claimed, the date of purchase, the invoice number and should be clearly marked with the returning purchaser's full address;
- g. Any returned Goods claimed to be faulty by the Buyer and consequently tested and found to be working correctly by Videx, will be returned to the Buyer and a cost will be charged accordingly.

8) Payment

Unless agreed in writing by Videx, the following general conditions apply:

- a. Payment Terms and Conditions will be specified on the invoice;
- b. Interest rates as per the banking conditions effective at the time will be charged on top of overdue payments;

9) Governing Law and Jurisdiction

This Agreement shall be governed by and construed in accordance with the laws of the Republic of Italy. All the disputes arising out of or in connection with this Agreement shall be submitted to the exclusive jurisdiction of the Courts of Fermo (Italy).



100% MADE IN ITALY

VIDEX ELECTRONICS S.P.A.

Via del Lavoro, 1 - 63846 Monte Giberto (FM) Italy

Tel: (+39) 0734 631669 - Fax: (+39) 0734 632475

info@videx.it - [facebook.com/videx.electronics](https://www.facebook.com/videx.electronics)

www.videx.it



Portugal office:

VX IBÉRIA, UNIPESSOAL LDA

Rua Tenente Mário Grilo, 26 D, E, F
4200-397 Porto

Phone: (+351) 221 124 531

www.videx.it

comercial@videx.it



Singapore office:

VIDEX ASIA PACIFIC PTE LTD

1 Tampines North Drive 1,

#06-08, T-Space

Singapore 528559

Phone: (+65) 81898912

commercial@videx.it



Main UK office:

VIDEX SECURITY LTD

1 Osprey Trinity Park

Trinity Way

London E4 8TD

Phone: (+44) 0370 300 1240

Fax: (+44) 020 8523 5825

www.videxuk.com

marketing@videxuk.com



Northern UK office:

VIDEX SECURITY LTD

Unit 4-7

Chillingham Industrial Estate

Chapman Street

Newcastle Upon Tyne - NE6 2XX

Tech Line: (+44) 0191 224 3174

Phone: (+44) 0370 300 1240

Fax: (+44) 0191 224 1559



Greece office:

VIDEX HELLAS Electronics

48 Filolaou Str.

11633 Athens

Phone: (+30) 210 7521028

(+30) 210 7521998

Fax: (+30) 210 7560712

www.videx.gr

videx@videx.gr



Danish office:

VIDEX DANMARK

Hammershusgade 15

DK-2100 Copenhagen

Phone: (+45) 39 29 80 00

Fax: (+45) 39 27 77 75

www.videx.dk

videx@videx.dk



Benelux office:

NESTOR COMPANY NV

E3 laan, 93

B-9800 Deinze

Phone: (+32) 9 380 40 20

Fax: (+32) 9 380 40 25

www.nestorcompany.be

info@nestorcompany.be



Dutch office:

NESTOR COMPANY BV

Business Center Twente (BCT)

Grotestraat, 64

NL-7622 GM Borne

www.nestorcompany.be

info@nestorcompany.be

