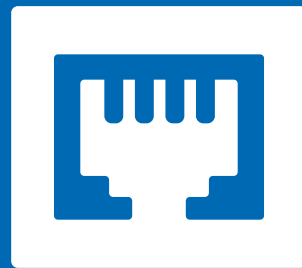




IP

2020



IP



 **VIDEX**[®]

THE POWER TO SECURE



Founded in 1986, Videx designs and manufactures video/audio door entry systems and access control, standing among the leading companies in the field worldwide.

The extensive range, quality, service, and the continuity of a purely “Made in Italy” brand have been key factors for Videx's Success through its 30 year history.

Our Company exports 95% of the production to more than 45 countries all over the world, offering unique solutions ranging from one or two way systems to complex systems with thousands of apartments.

Videx manufactures using only the highest quality components from a select number of well established Italian companies in order to guarantee the highest standards. Our quality control procedures ensure we deliver a first class product to our customers.

VIDEX have been UNI ISO 9001 certified since 2005.

VIDEX is socially and environmentally responsible, producing its own clean energy and using it to run its purpose built factory: two solar panel systems, accounting for 200Kw power, entirely fulfil its needs. Solar panels have been installed on the plant roof ensuring zero environmental impact.



IP

Videx's IP system is the latest innovation from Videx.

It is a very “versatile” system, its flexibility enables it to be used on installations with 1 entrance and 1 apartment through to multiple entrance, multiple block systems with thousands of apartments and concierge facilities.

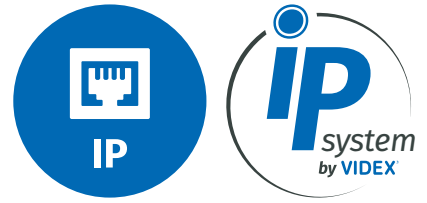
To install a system with future expansion in mind is no longer a problem: to add additional entrances or apartment units, you simply need to connect them to the system network, then everything can be dynamically configured to the new requirements.

IP systems use existing infrastructure, limitations of conventional systems such as distances are no longer an issue.

IP technology offers greater flexibility and more advanced features with simple firmware upgrades and configurations changes.

The outdoor stations available for this system can be either push button modules (up to 42 buttons for use in small installations or as part of larger installation for sub entry points) or digital call panels which can handle up to 10.000 apartments/users.

Digital panels can also include integrated coded access and proximity (RFID) technologies allowing for each apartment/user to use a code and/or proximity key to gain entry.



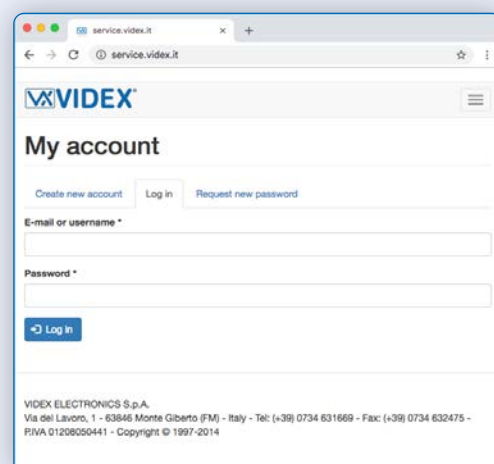
MAIN SPECIFICATIONS:

- 4000 Series Modular System
- Functional or digital call panel with Back lit alpha-numeric (A-F) keypad or name search & scroll facility keypad and 128x64 pixel graphical LCD display providing clear visual messages.
- Call progress LED's or Speech annunciation
- Optional integrated proximity access control
- Programmable call & conversation time
- SIP compliant call panels
- Dry contact relay outputs on both indoor & outdoor station
- Active low inputs on both indoor & outdoor station
- POE Indoor stations & Outdoor Stations (Not functional version)
- Outdoor stations with video input for external composite camera
- Up to 16 indoor station per apartment
- Up to 10.000 apartments
- Unlimited door panels
- RJ45 Plug
- Connection via LAN, WAN or private network
- Call log features with picture capture facility
- Intercommunication facility
- Door stations address book with selective camera recall
- System relays (remote or door panel) address book with activation by touch screen or button
- Free Android & iOS app with multiple installation management

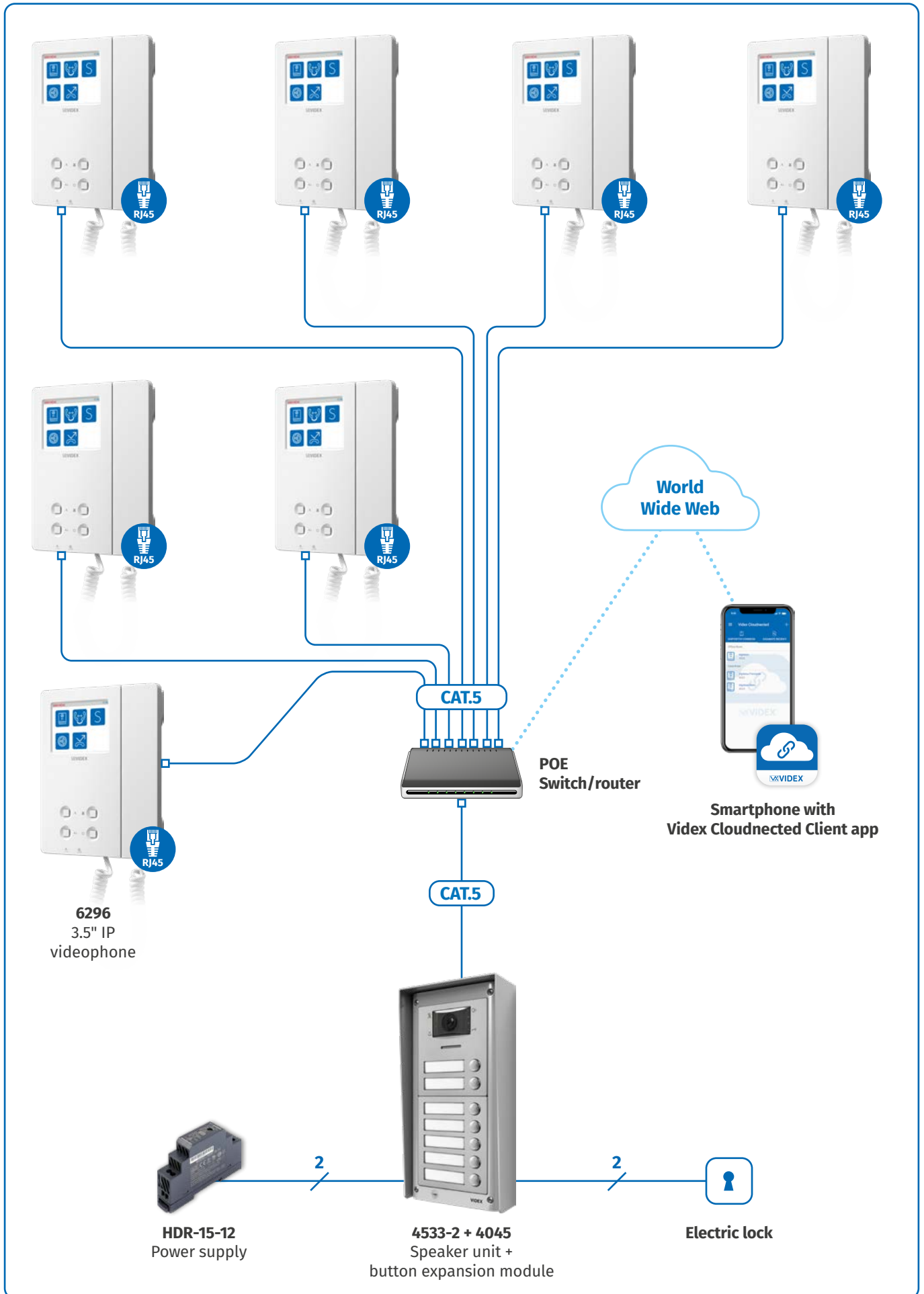


To download the programming software wizard and obtain the latest firmware and manuals please visit the following website and register

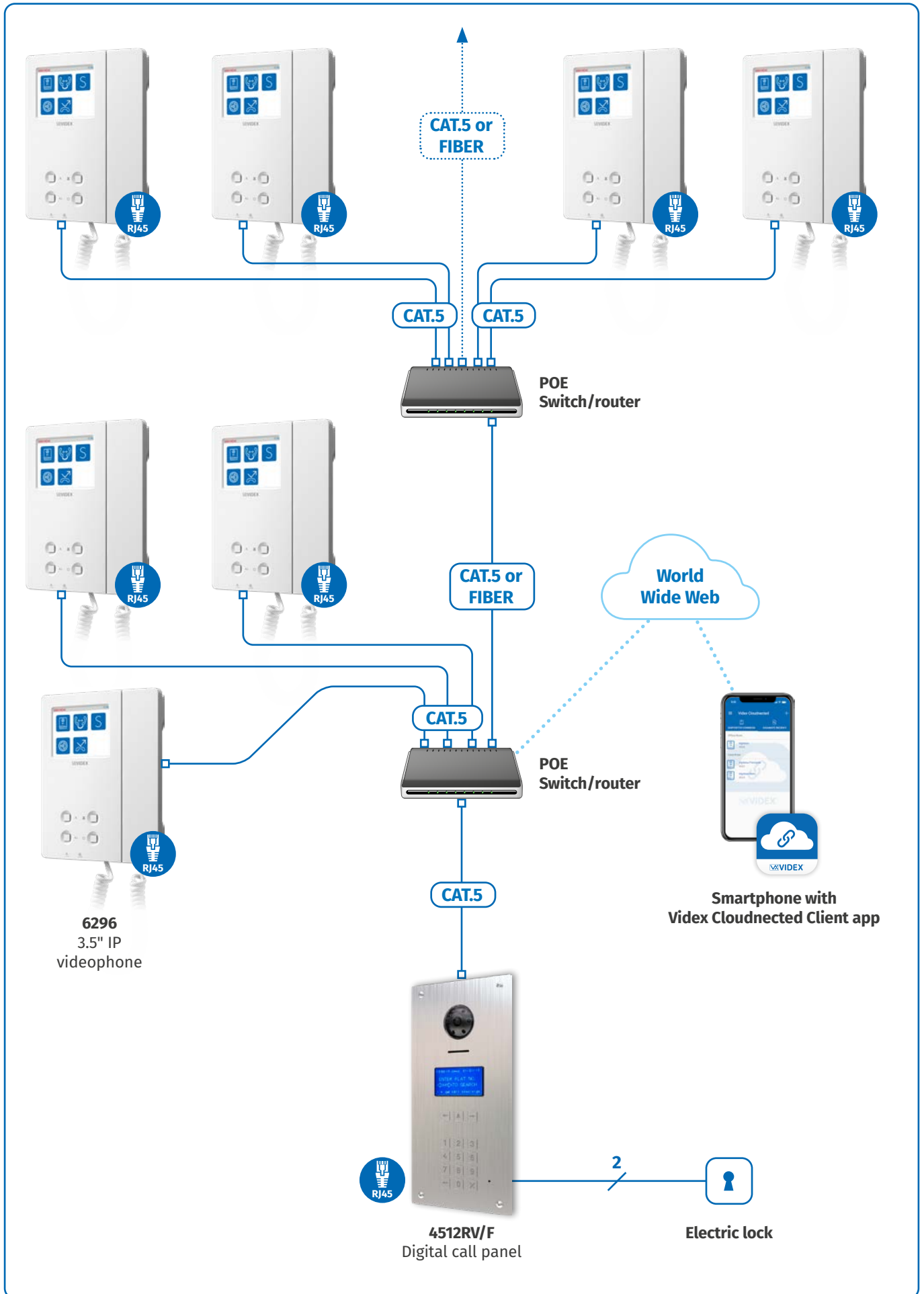
<https://service.videx.it/>



EXAMPLE OF IP SYSTEM WITH 7 INDOOR STATIONS



EXAMPLE OF IP SYSTEM WITH DIGITAL CALL PANEL AND MULTIPLE INDOOR STATIONS



GLOSSARY

Term	Definition
Busy LED	Indicates that the system is busy
Ring LED	Indicates that the call is in progress
Speak LED	Indicates that the conversation is in progress
Open LED	Indicates that the door relay is active
Door open LED	Indicates the door status (additional connections required)
Privacy LED	Indicates that the privacy service is enabled
Service LED	Indicates the service activation
Answer LED	Indicates that the unit is in conversation
PTE	Active low input that enables the integral relay
TRD	Active low input to enable the trade door open code for periodic visitors such as postman, milkman, maintenance persons etc.
REL	Active low output to control a relay for the electric lock
LGT	Active low output to control a relay for an additional service such as stair light etc.
Conv. Time	Length of a time before a conversation is automatically closed
Door Time	Duration of door relay activation
Device No	Device ID for recall purposes on multiple entrances systems
Camera recall	Function that allows to switch on the system without receiving a call previously
PTT	Push to talk operating mode, the resident must press the button to talk and release it to listen
Local Bell Input	Active low input for local bell facility

OUTDOOR STATIONS

**4000
SERIES**

4000 SERIES



Stainless Steel



Aluminium /A



Matte /M

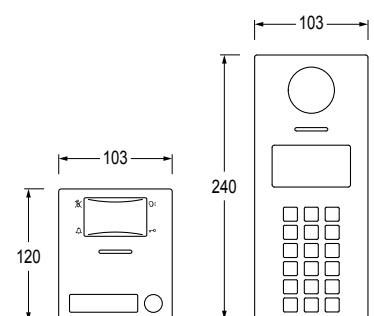
MODULES, MATERIALS AND FINISHES

The 4000 Series modules are available in the following versions:

- Audio/video speaker unit;
- Button expansion modules;
- Codelocks;
- Proximity reader modules;
- Fingerprint reader modules.

The module front plates of the standard line are available in 3 finishes:

- Mirror finished stainless steel (standard);
- Matte finished stainless steel;
- Anodized aluminium.



To order finishes other than the standard, suffix the product code with “/M” for matte finished stainless steel or “/A” for the anodized aluminium finish.

Vandal resistant line is only available in brushed stainless finish.

SPEAKER UNIT MODULES



Wide Camera
standard



IDC connector



Art.4533-0



Art.4533-1



Art.4533-2

Art.		4533-0	4533-1	4533-2
Buttons	Built-in	0	1	2
	Max		42	
Audio/Video		Audio/Video		
Camera sensor/LED/ Type/Tilting		Wide angle camera with white light illumination LED's		
Video signal mode		---		
Plate type		Standard		
Plate finishes		Mirror finished stainless steel (Standard), /M Matte finished stainless steel, /A Anodized aluminium		
Wide Camera Opt		Standard		
Integrated proximity access		---		
Name plate/ Back light		No	Yes/Blue	
Visual signalling LED		Busy, Ring, Speak, Door Open		
Programmings		Conversation time; Door relays time; Relay operating mode		
Size		1 module		
Adjustment potentiometers		Digital regulations		
Relay		2		
Relay contacts		Dry contacts (12Vac/dc 0.4A max)		
Relay voltage		Max 24Vac/dc 0.4A		
IDC connector		Yes		
PTE input		Yes, 2		
Working voltage		12 Vdc		
Working temperature		-10 +50°C		

BUTTON EXPANSION MODULES (SINGLE AND DOUBLE ROW)



Art. 4042



Art. 4043



Art. 4044



Art. 4045



Art. 4042D



Art. 4043D



Art. 4044D



Art. 4045D

Art.	4042	4043	4044	4045	4042D	4043D	4044D	4045D
Buttons	2	3	4	5	4	6	8	10
Plate STD/VR	Standard							
Plate finishes	Mirror finished stainless steel (standard), /M Matte finished stainless steel, /A Anodized aluminium							
Name plate/ Back light	Yes/Blue							
IDC connector	Yes							
Size	1 module							
Button connection terminals	16 pin IDC connector							
Working voltage	12 Vdc +/- 10%							
Working temperature	-10 +50°C							



IDC connector

INFORMATION AND BLANK MODULES



Art. 4840



Art. 4846

Art.	4840	4846
Plate type	Standard	
Plate finishes	Mirror finished stainless steel (Standard), /M Matte finished stainless steel, /A Anodized aluminium	
Opening/ Information card size (mm)	---	83x104 96x113
Size	1 module	
Backlight	---	Yes/Blue
Working voltage	---	12 Vdc
Working temperature	-10 +50°C	

ACCESS CONTROL MODULES

Codelock Modules



Art. 4901
Art. 4902
Art. 4903



Back-lit
buttons

Art.	4901	4902	4903
Relay	3	2	
Relay contacts	Dry contacts		
Relay voltages	Max 24Vac/dc 2A		
PTE input	Yes, for relay 1 & 2		
Codes	3	1000	---
Operation	Standalone	Standalone/Connected	
Programming	Keypad	Keypad/PC	
Interfaces	---	RS-485, USB	RS-485
Keypad back light	Yes, blue. Programmable		
Plate type	Standard		
Plate finishes	Mirror finished stainless steel (Standard), /M Matte finished stainless steel, /A Anodized aluminium		
Size	1 module		
Working voltage	12/24 Vac/dc		
Working temperature	-10 +50°C		

ACCESS CONTROL MODULES

Proximity Key Reader Modules



Art. 4849
Art. 4850
Art. 4850P

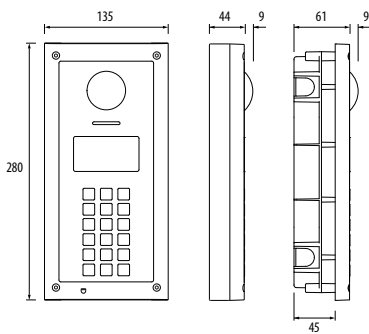
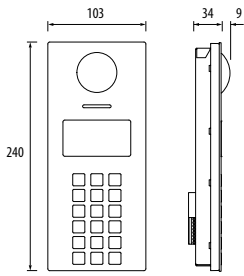


Proximity reader

Art.	4849	4850	4850P
Relay	---	1	1
Relay contacts	---	Dry contacts	
Relay voltages	---	Max 24Vac/dc 2A	
PTE input	---	Yes	
Keys	Control Unit ¹	100	1000
RFID frequency	125KHz		
Operation	Connected	Standalone	Standalone/Connected
Programming	---	Unit buttons	Unit buttons/PC
Interfaces	---		RS-232/RS-485
Plate type	Standard		
Plate finishes	Mirror finished stainless steel (Standard), /M Matte finished stainless steel, /A Anodized aluminium		
Size	1 module		
Working voltage	12V ac/dc or supplied by the BUS using Art.2322		
Working temperature	-10 +50°C		

¹ The number of keys managed depends on the control unit connected (Vprox20, Vprox100, Vprox250, Vprox1000 and Vprox4000).

VANDAL RESISTANT DIGITAL CALL PANELS



Art. 4512V



Art. 4512RV



Vandal resistant



Wide Camera standard



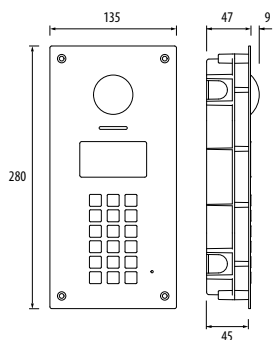
RJ-45 plug



Proximity reader

Art.	4512V	4512RV
Audio/Video	Audio/Video	
Repertory name facility	---	Yes
Camera sensor/ LED/ Type/ Tiltening	Wide angle camera with white light illumination LED's	
Video signal mode	---	
Wide Camera opt	Standard	
Display/Backlight	Graphical 128x64px/Blue	
Built-in proximity key reader	Yes 125Khz H4102 10000 Keys	
Programming	Keypad/PC via VX IP Wizard	
Interfaces	RS-485/WIEGAND	
Plate type	Vandal resistant	
Plate finishes	Brushed stainless steel	
Keypad buttons	18	15
Mounting	Modular 4000 Series	
Size	2 modules	
Speach board opt	Standard	
Apartments/Users/Codes	10000/10000/10000	
Access control	User code/Proximity key/User code + proximity key	
Events log	---	
Relay	2	
Relay voltages	Max 24Vac/dc 2A	
Relay contacts	Dry contacts / Capacitor discharge (12Vac/dc 1A max)	
PTE input	Yes, 2	
TRD input	Yes	
Working voltage	12 Vdc	
Working temperature	-10 +50°C	

VANDAL RESISTANT DIGITAL CALL PANELS



Art. 4512V/F



Art. 4512RV/F



Vandal resistant



Wide Camera standard



RJ-45 plug



Proximity reader

Art.	4512V/F	4512RV/F
Audio/Video	Audio/Video	
Repertory name facility	---	Yes
Camera sensor/ LED/ Type/ Tilting	Wide angle camera with white light illumination LED's	
Video signal mode	---	
Wide Camera opt	Standard	
Display/Backlight	Graphical 128x64px/Blue	
Built-in proximity key reader	Yes 125Khz H4102 10000 Keys	
Programming	Keypad/PC via VX IP Wizard	
Interfaces	RS-485/WIEGAND	
Plate type	Vandal resistant	
Plate finishes	Brushed stainless steel	
Keypad buttons	18	15
Mounting	Flush	
Size (mm)	135x280x47	
Flush back box size (mm)	120x263x45	
Speach board opt	Standard	
Apartments/Users/Codes	10000/10000/10000	
Access control	User code/Proximity key/User code + proximity key	
Events log	---	
Relay	2	
Relay voltages	Max 24Vac/dc 2A	
Relay contacts	Dry contacts / Capacitor discharge (12Vac/dc 1A max)	
PTE input	Yes, 2	
TRD input	Yes	
Working voltage	12 Vdc	
Working temperature	-10 +50°C	



2 modules outdoor station with Art. 4882



2 modules outdoor station with Art. 4882/AP

FRONT SUPPORT AND SURFACE MOUNTING UNIT AVAILABLE IN THE FOLLOWING FINISHES

Front support, surface mounting units and rainshields are available in 2 different finishes:

- Embossed metallized gun-metal grey (standard finish);
- Aluminium Painted.

To order Aluminium Painted finish, add to the product code "/AP".



2 modules outdoor station with Art. 4882 + 4872



2 modules outdoor station with Art. 4882/AP + 4872/AP



Art. 4851

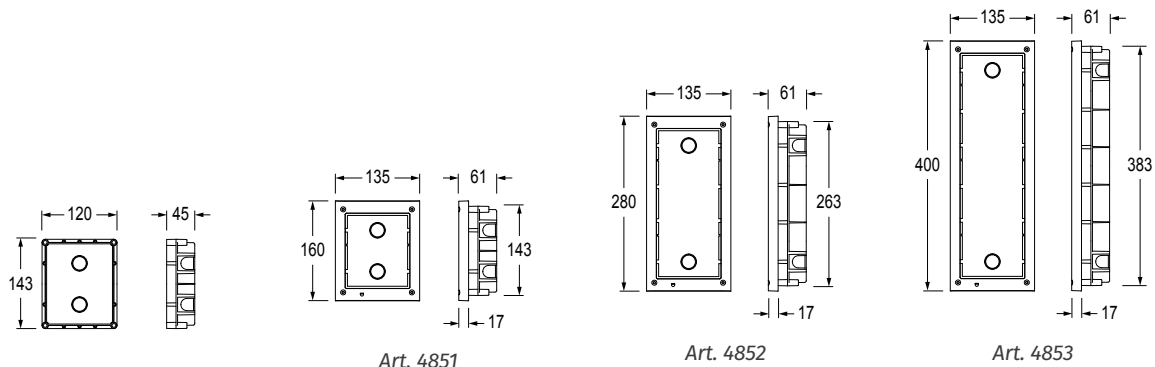


Art. 4852/AP

FRONT SUPPORT

The front support is available in 1, 2 and 3 module versions and includes:

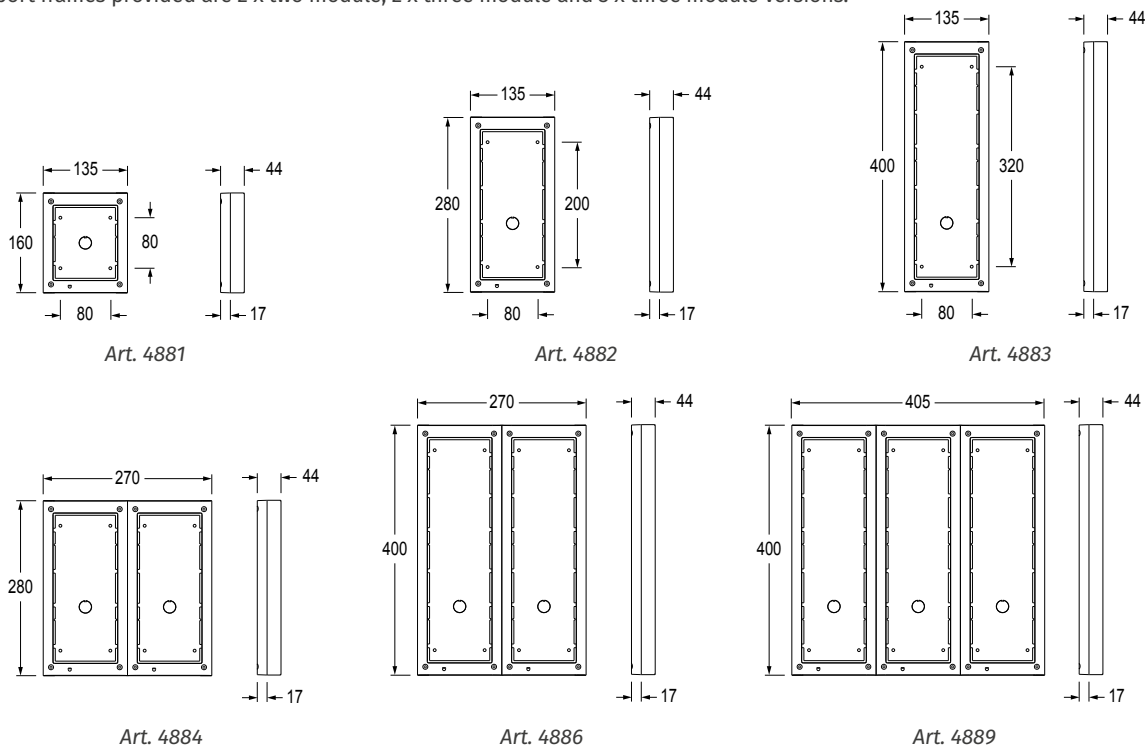
- The flush back box.
- The module support frame is provided with a waterproof gasket and security screws for fixing to the flush back box.
- Spacers to connect the back boxes together when the outdoor station requires more than 3 modules.



SURFACE MOUNTING UNIT

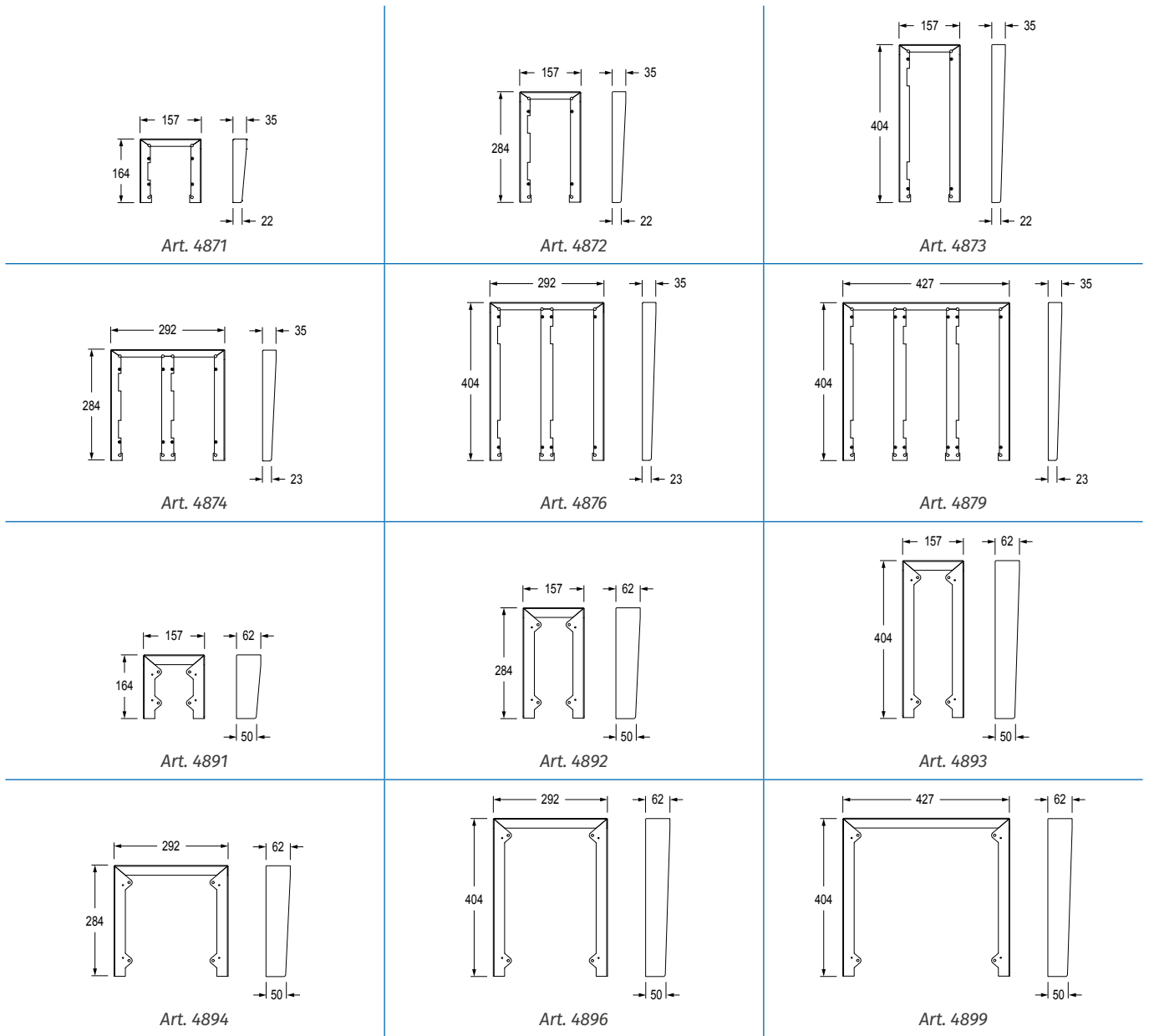
The surface mounting units are available in 1, 2, 3, 4, 6 and 9 module versions which include:

- The surface box to fix to the wall with the screws provided.
- The module support frames are provided with waterproof gaskets and security screws. When surface mounting 4, 6 or 9 module versions, the support frames provided are 2 x two module, 2 x three module and 3 x three module versions.



Art.	4851	4852	4853	4881	4882	4883	4884	4886	4889
Modules	1	2	3	1	2	3	4	6	9
Mounting	Flush			Surface					
Protrusion (mm)	17mm			44mm					
Recessed depth (mm)	45			---					
Size	135x160x17	135x280x17	135x400x17	135x160x44	135x280x44	135x400x44	270x280x44	270x400x44	405x400x44
Columns				1			2		3
Back Box	120x143x45	120x263x45	120x383x45	---					
Frame finishes	Gun metal grey (Standard), /AP Aluminium Painted								

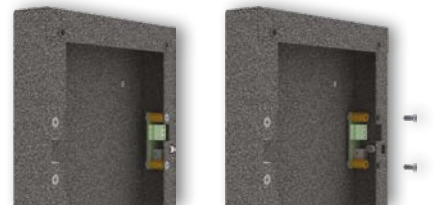
RAINSHIELDS



Art.	4871	4872	4873	4874	4876	4879	4891	4892	4893	4894	4896	4899
Modules	1	2	3	4	6	9	1	2	3	4	6	9
Mounting	Flush						Surface					
Protrusion (mm)	35mm						62mm					
Size (mm)	157x164 x35	157x284 x35	157x404 x35	292x284 x35	292x404 x35	427x404 x35	157x164 x62	157x284 x62	157x404 x62	292x284 x62	292x404 x62	427x404 x62
Columns	1			2		3	1			2		3
Finishes	Gun metal grey (Standard), /AP Aluminium Painted											

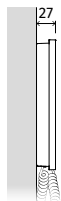
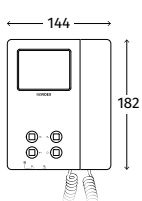
ANTITAMPERING

An anti-tamper switch Art. 482 is available for the 4000 Series surface mounting boxes.



VIDEOPHONES

**6200
SERIES**



Touch screen



Memory Board standard



RJ-45 plug



Art. 6296



Art. 6296/B

Art.	6296
Series	6200
Display	3.5" Hi-Res colour LCD TFT touch screen
Handset/Hands Free	Handset
Buttons No.	4
Buttons/Services¹	Service, Camera recall, Door-open/Intercommunicating call, Privacy (all buttons programmable)
Privacy	Yes, timed
LEDs²	Lost call, Privacy ON
Memory Board opt.	Yes, Standard
Adjustments	Call tone volume, Brightness
Programmings	Privacy duration, Number of rings, Intercommunicating call, Melody, Door Panels phonebook
Inputs	2
Outputs	2
Mounting	Surface
Finishes	Satin white (standard), / B Black Rubber
Desktop kit	Art. 62932

¹ Some buttons are used for multiple functions.

² The operation of some LED's and the functions described may require additional cabling.

VIDEOPHONES ACCESSORIES

Art.	62932
Series	6200
Accessory	Table top desk kit
Size (mm)	116x204x134
Finishes	Brushed stainless steel
Material	3mm thickness stainless steel



Art. 62932

SOFTWARE AND APPS



Videx Cloudnected client

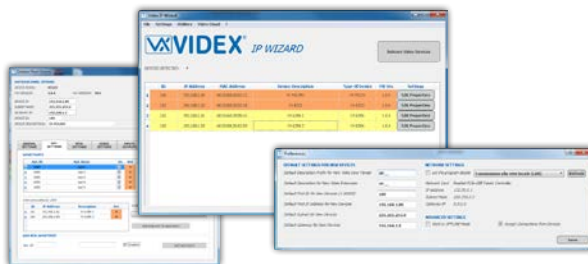
Videx CloudNected Client is a cross-platform application for smartphones and tablets that allows the user to interface to Videx IP products easily.

Register your account in the app and connect Videx IP devices by simply acquiring the device's QR code.

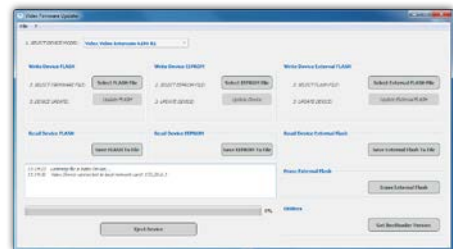
You can receive calls coming from your door panel wherever you are, without needing to keep the application open.

Call the connected devices and operate gates and doors even when you are away from home.

Note: this application does not replace the use of traditional monitors; the application performances are subject to the energy saving mode of the smartphone and to connectivity.



VX IP Wizard



Firmware updater

Art.	VX IP Wizard	Firmware updater
Description	PC software	
Operating system	MS Microsoft Windows® 7 or higher	
Function	Wizard configuration software for VIDEX IP System	Software for firmware updates
Note	<p style="text-align: center;"> To download the programming software wizard and obtain the latest firmware and manuals please visit the following website and register www.videx-service.it </p>	



COMPLEMENTS

Art.	HDR-15-12
Description	Power supply unit
Input voltage	85~264Vac
Output voltages	12Vdc / 1.25A
Housing	1 module A Type DIN box
Mounting	DIN bar
Dimensions (mm)	17.5x90x54.5mm



Art. HDR-15-12

TERMS AND CONDITIONS OF SALE

1) DEFINITIONS

In this document the following words shall have the following meanings:

- a. "Buyer" means the organisation or person who buys Goods;
- b. "Goods" means the items to be supplied to the Buyer by the Seller; Videx Electronics S.p.A. will be hereafter called "Videx".

2) GENERAL CONDITIONS

Any variation to these Terms and Conditions (including any special terms and conditions agreed between the parties) shall be inapplicable unless agreed in writing by Videx.

3) ORDERS

Any order sent to Videx implies the Buyers acceptance of all the conditions listed in this document. Purchases are finalized when the Buyer receives the order confirmation from Videx. After this confirmation, the order cannot be cancelled unless Videx explicitly agrees in writing.

4) PRICES

Price list is to be considered variable as it is subject to variations in production costs which our outside of the control of Videx. Unless otherwise agreed in writing, prices shall be considered ex-works.

5) RETENTION OF TITLE

Title to the Goods shall not pass to the Buyer until Videx has been paid in full for the Goods.

6) RETURNED GOODS

Returned Goods will not be authorized unless agreed in writing by Videx. Authorized Goods will be accepted only if intact and in their original packaging. Goods not included in the price lists in force will not be accepted. In case of accepted returned Goods a credit note, corresponding to the invoiced amount reduced by 30%, will be issued.

7) LIABILITY

- a. Videx will not be held responsible for damages arising from incorrect installations which do not comply with the specifications provided or for installations carried out by third parties, or for works carried out by third parties on behalf of the Buyer;
- b. Videx will make good, by repair or by supply of a replacement, defects which, under proper use, appear in the Goods within a period of 12 months after the Goods been sold and arise solely from faulty design, materials or workmanships; always provided that the defective parts have been acknowledged and so declared by Videx;
- c. Videx does not acknowledge any compensation for direct or indirect damages;
- d. All goods must be returned to Videx at Buyer's own expenses, until such time as these are tested Videx admits no liability for their condition;
- e. Videx admits no liabilities for defective parts caused by wear and tear;
- f. All Goods returned for repair must be accompanied by a note in writing stating the nature of the defect claimed, the date of purchase, the invoice number and should be clearly marked with the returning purchaser's full address;
- g. Any returned Goods claimed to be faulty by the Buyer and consequently tested and found to be working correctly by Videx, will be returned to the Buyer and a cost will be charged accordingly.

8) PAYMENT

Unless agreed in writing by Videx, the following general conditions apply:

- a. Payment Terms and Conditions will be specified on the invoice;
- b. Interest rates as per the banking conditions effective at the time will be charged on top of overdue payments;

9) GOVERNING LAW AND JURISDICTION

This Agreement shall be governed by and construed in accordance with the laws of the Republic of Italy. All the disputes arising out of or in connection with this Agreement shall be submitted to the exclusive jurisdiction of the Courts of Fermo (Italy).

Although every effort has been made to provide accurate information, there may be technical or print errors in this catalogue. Videx reserves the right to make changes, corrections and improvements to such information at any time and without notice.

NOTES



WWW.VIDEX.IT

VIDEX ELECTRONICS S.P.A.

Via del Lavoro, 1 - 63846 Monte Giberto (FM) Italy

Tel: (+39) 0734 631669 - Fax: (+39) 0734 632475

www.videx.it - info@videx.it

[facebook.com/videx.electronics](https://www.facebook.com/videx.electronics)



Main UK office:

VIDEX SECURITY LTD

1 Osprey Trinity Park
Trinity Way
LONDON E4 8TD
Phone: (+44) 0870 300 1240
Fax: (+44) 020 8523 5825
www.videxuk.com
marketing@videxuk.com



Northern UK office:

VIDEX SECURITY LTD

Unit 4-7
Chillingham Industrial Estate
Chapman Street
NEWCASTLE UPON TYNE - NE6 2XX
Tech Line: (+44) 0191 224 3174
Phone: (+44) 0870 300 1240
Fax: (+44) 0191 224 1559



Greece office:

VIDEX HELLAS Electronics

48 Filolaou Str.
11633 ATHENS
Phone: (+30) 210 7521028
(+30) 210 7521998
Fax: (+30) 210 7560712
www.videx.gr
videx@videx.gr



Danish office:

VIDEX DANMARK

Hammershusgade 15
DK-2100 COPENHAGEN
Phone: (+45) 39 29 80 00
Fax: (+45) 39 27 77 75
www.videx.dk
videx@videx.dk



Benelux office:

NESTOR COMPANY NV

E3 laan, 93
B-9800 Deinze
Phone: (+32) 9 380 40 20
Fax: (+32) 9 380 40 25
www.videx.be
info@videx.be



Dutch office:

NESTOR COMPANY BV

Business Center Twente (BCT)
Grotestraat, 64
NL-7622 GM Borne
www.videxintercom.nl
info@videxintercom.nl